

# SLMovieListEditor



Task editor  
for the MovieList title element

*Revision as of:  
November 23, 2015*

User's Guide



---

## Notice

The information in this document is subject to change without prior notice in order to improve reliability, design, or function and does not represent a commitment on the part of this company.

In no event will we be liable for direct, indirect, special, incidental, or consequential damages arising out of the use or the inability to use the product or documentation, even if advised of the possibility of such damages.

Copyright © 1997–2017 SoftLab-NSK Co., Ltd.  
All Rights Reserved.

No part of this reference manual may be reproduced or transmitted in any form or by any means without the prior written permission of this company.

Throughout this manual, we make reference to product names that are trademarks of other companies. We are using these names for identification purposes only, with no intention of infringement of the trademarks.

## FCC Information

### FCC ID:

This equipment has been tested and found to comply with the limits for a Class B digital device, pursuant to Part 15 of the FCC Rules. These limits are designed to provide reasonable protection against harmful interference in a residential installation. This equipment generates uses and can radiate radio frequency energy and, if not installed and used in accordance with the instructions, may cause harmful interference to radio communications. However, there is no guarantee that interference will not occur in a particular installation. If this equipment does cause harmful interference to radio or television reception, which can be determined by turning the equipment off and on, the user is encouraged to try to correct the interference by one or more of the following measures:

- Reorient or relocate the receiving antenna.
- Increase the separation between the equipment and receiver.
- Connect the equipment into an outlet on a circuit different from that to which the receiver is connected.
- Consult the dealer or an experienced radio/TV technician for help.

Shielded cables and I/O cards must be used for this equipment to comply with the relevant FCC regulations. Changes or modifications not expressly approved in writing by SoftLab-NSK Ltd. may void the user's authority to operate this equipment.

## Limited Warranty

Our company warrants this product against defects in materials and workmanship for a period of one year from the date of purchase. During the warranty period, products determined by us to be defective in form or function will be repaired or replaced at our option, at no charge. This warranty does not apply if the product has been damaged by accident, abuse, misuse, or as a result of service or modification other than by us.

This warranty is in lieu of any other warranty expressed or implied. In no event shall we be held liable for incidental or consequential damages, such as lost revenue or lost business opportunities arising from the purchase of this product.



---

## Table of Contents

Introduction.....	4
Starting the program .....	5
Main window.....	6
1. General overview .....	6
2. Task table.....	7
3. Toolbar .....	8
4. Main menu commands.....	9
Work Parameters .....	10
Working with the program .....	11
1. General procedure .....	11
2. Work parameter settings.....	14
3. Adding graphical files and display settings .....	15
4. Adding video clips and playback settings.....	16
4.1. Adding a video clip .....	16
4.2. TrimEditor .....	17
4.3. Movie task editor window .....	19
5. Adding pauses to the task list .....	20
6. Editing the list.....	21
7. Editing Overall Duration.....	21
Import Subtitles .....	23
1. General procedure .....	23
2. Preparation .....	24
3. Create Subtitles Function .....	25
Addendum. XML scheme structure of the task file.....	28

---



## Introduction

The SLMovieListEditor program is designed to create and edit tasks for the MovieList title element.

A task for the MovieList title element is a XML file. It lists all the video clips, graphical files and pauses in according to the necessary play order, while also indicating the duration of the full playback and the duration of the transitions at the beginning and end.

The SLMovieListEditor program allows for the automatic creation of an XML file based on a list of video, graphical files and pauses, prepared by the user.

Task files for the MovieList title element have the SLMovieList extension.

**Note:** The MovieList title element is designed to play a sequence of video clips and images in a specified area of the screen. The video and image files can be played continuously or be separated by pauses. Files with transparency can be used. For a list of supported video and graphical files, please see the Q&A of the SoftLab-NSK site, [section 4.21](#). The duration of showing images and the duration of the pauses are set by the user.

For more information on the MovieList title element, see the «[FDTitle Designer: Title Project Editor](#)» user's guide.

The guide describes the program interface and the general procedure of working with it. A separate section deals with the Create Subtitle function (used when playing movies with subtitles from SRT files).

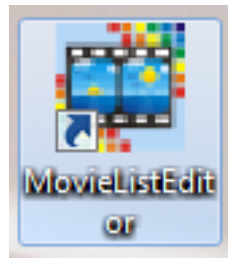


## Starting the program

The program file is: ~\FDTitle\SLMovieListEditor.exe, where: ~ – is the full path to the folder containing the ForwardT Software.

You can start the program by using:

- the program icon;



- the Start Menu: All programs > ForwardT Software > Titles > MovieListEditor;
- the command line.

The command line has the following format:

"Full path to the program file" ["full path to the task file"]

where:

- program file – SLMovieListEditor.exe;
- task file – file with the SLMovieList extension. If the task file is specified, the main program window will load the list of files and paused from the specified task file. If a task file is not specified, then the main program will open with a blank list.

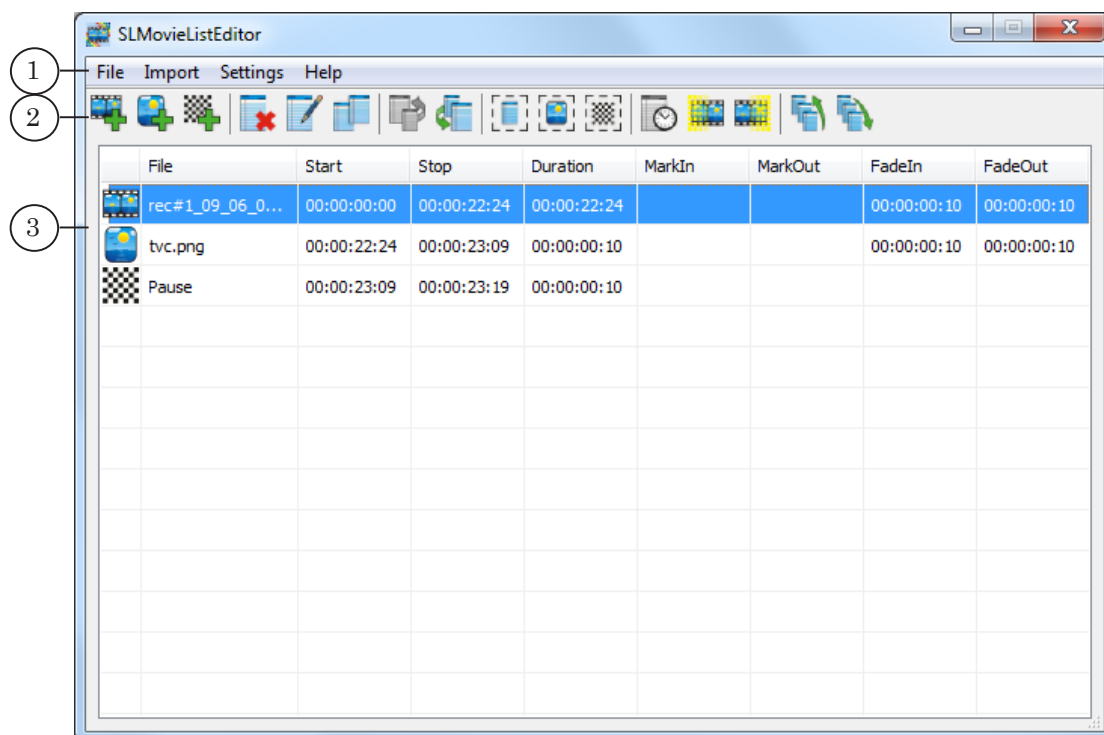
➡ **Example:** To start the program in order to edit an existing file test.SLMovieList, located in the D:\Test folder, use the following command:  
"C:\Program Files\ForwardT Software\FDTitle\SLMovieListEditor.exe" "D:\Test\test.SLMovieList".



## Main window

### 1. General overview

The main window of the program is designed to create and edit tasks for the MovieList title element.



Main Window. Assignment of control elements:

1 – main program menu; 2 – commands for editing lists of files and pauses; 3 – table with a list of the task items.




When starting the program for the first time, the language interface is chosen automatically. In order to change the display language, open the settings window (Settings > Program Settings) and select the necessary language.

In order to get information on the purpose of a button on the toolbar, hover over the button and a tooltip will appear.



## 2. Task table

The lists of files and pauses that need to be played in one ad block are formed in the task table. One row in the table contains one task item.

1	2	3	4	5	6	7	8	9
File	Start	Stop	Duration	MarkIn	MarkOut	FadeIn	FadeOut	
 rec#1_09_06_0...	00:00:00:00	00:00:22:24	00:00:22:24			00:00:00:10	00:00:00:10	
 tvc.png	00:00:22:24	00:00:23:09	00:00:00:10			00:00:00:10	00:00:00:10	
 Pause	00:00:23:09	00:00:23:19	00:00:00:10					

Task table. Assignment of control elements:

1 – icon, indicating the type of task item: video clip, image, pause; 2 – file name for video clips and images; 3 – task item start time; 4 – task item stop time; 5 – duration of playing the file or pause; 6 – mark in (for video clips); 7 – mark out (for video clips); 8 – starting transition duration; 9 – ending transition duration.

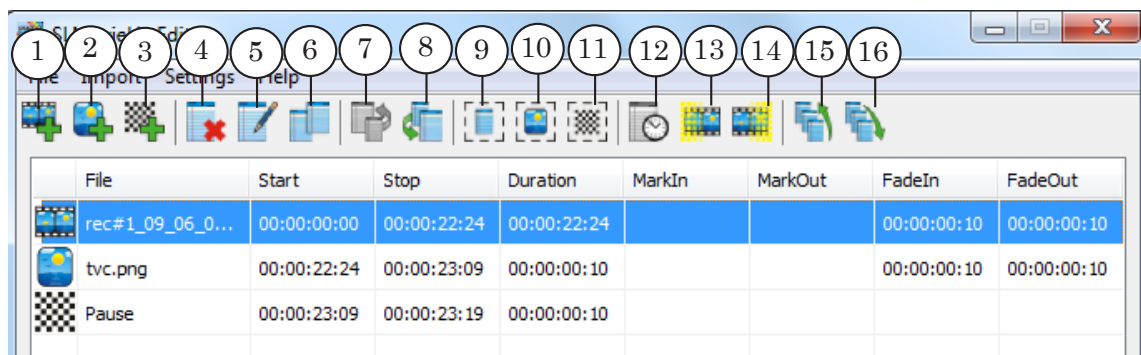
All time in the table is indicated in the hh:mm:ss:frames format.

The width of the table columns can be adjusted. You can return them to their default size by using the Settings > Default column width command.



### 3. Toolbar

The toolbar contains buttons for working with the task list: adding items, editing durations, changing the order of items, and so on.



**Table 1.** Toolbar buttons

Number on picture	Purpose
Add task items to the list	
1	Add movie.
2	Add picture.
3	Add pause.
Edit list	
4	Delete selected tasks from the list.
5	Open Task editor window for the selected item.
6	Double the selected items from the list.
Change task item order	
7	Move all selected items one row up.
8	Move all selected items one row down.
Select task items in the list	
9	Select all task items.
10	Select all pictures.
11	Select all pauses.
Edit duration	
12	Open Duration Settings window for the files and pauses selected from the list.





Number on picture	Purpose
13	Open Duration Settings window for the starting transition for all the files selected from the list.
14	Open Duration Settings window for the ending transition for all the files selected from the list.
Sort	
15	Sort the list in ascending order using the File column.
16	Sort the list in descending order using the File column.

#### 4. Main menu commands

The list below contains the full list of main menu commands.

**Table 2.** Main menu commands

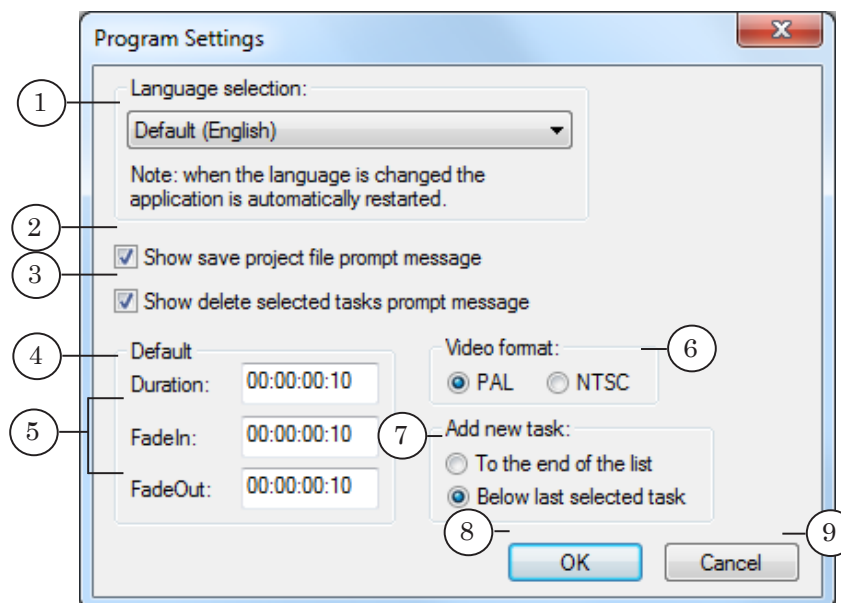
Name	Purpose
File menu – commands for managing task files	
New	Create new (empty) file.
Open	Open a task from an existing file.
Save	Save all changes to the current file.
Save as	Save current task to a file with a new name.
Adjust project	the Adjust project window for the overall duration of the task.
Import menu	
Create Subtitles	Open window for subtitle settings and import.
Settings menu – managing work parameters	
Program Settings	Open Program Settings window.
Restore columns	Default the column width in the task table.
Help menu	
About	Open window with information on the program.



## Work Parameters

The managing of work parameters is done in the Program Settings window. To open the window, use the Settings menu > Program Settings command.

- ✓ **Important:** Save the current project before opening the Program Settings window, otherwise all changes might be lost.



Program settings. Assignment of control elements:

1 – select language interface; 2 – turn on/off the popup to save changes in current task file if creating or opening another project, closing the program; 3 – turn on/off the popup confirming task item deletion; 4 – set a default duration length for images and pauses; 5 – set default duration for starting and ending transitions; 6 – select TV standard; 7 – choose where a new task item will be added to the list; 8 – close the window, saving all changes; 9 – close the window without saving changes.

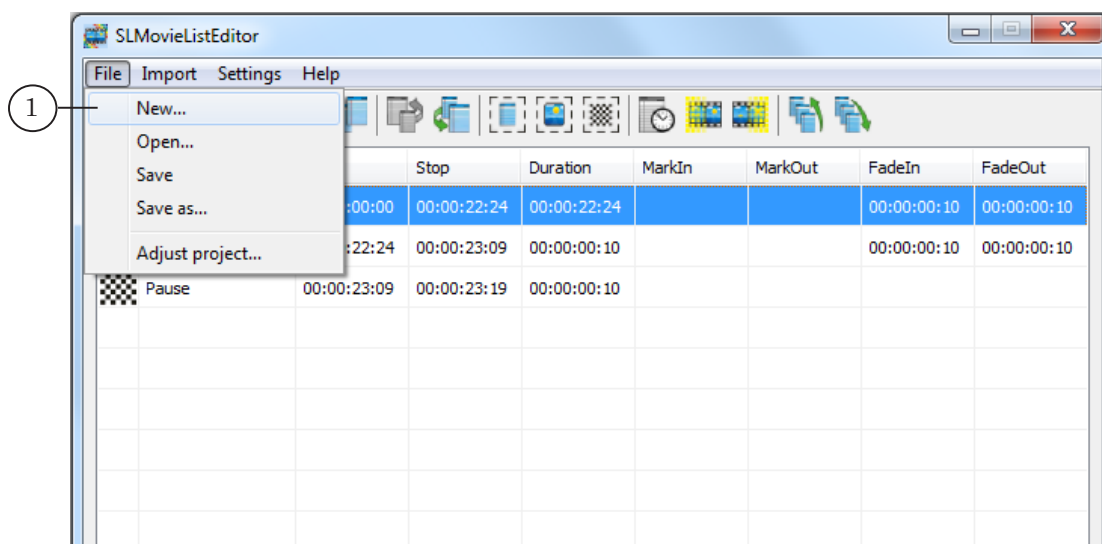


## Working with the program

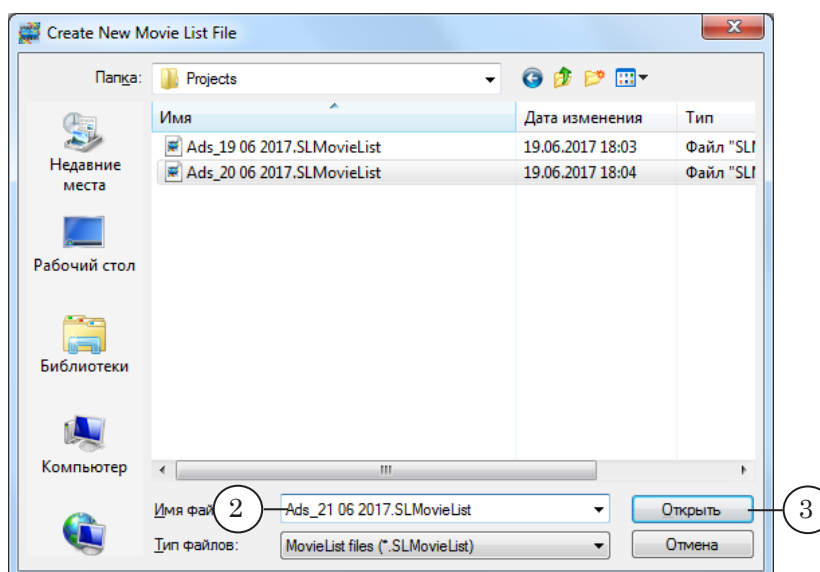
### 1. General procedure

**Note:** For more information on working with the program, see specific sections below.

1. Start the SLMovieListEditor program using the desktop shortcut or the Start menu: Programs > ForwardT Software > Titles > MovieListEditor.
2. If necessary, manage the program settings: the language interface, default values, etc.
3. Create a new task file (project). In order to do this:
  1. Select File > New (1).



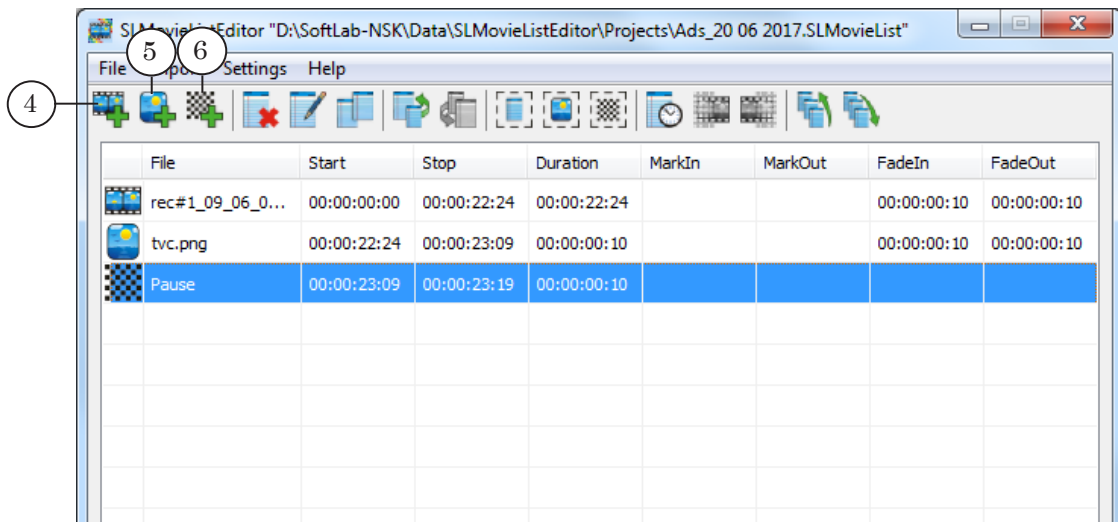
2. In the opened window set the file name (2) and select the folder in which it will be saved; press Open (3);



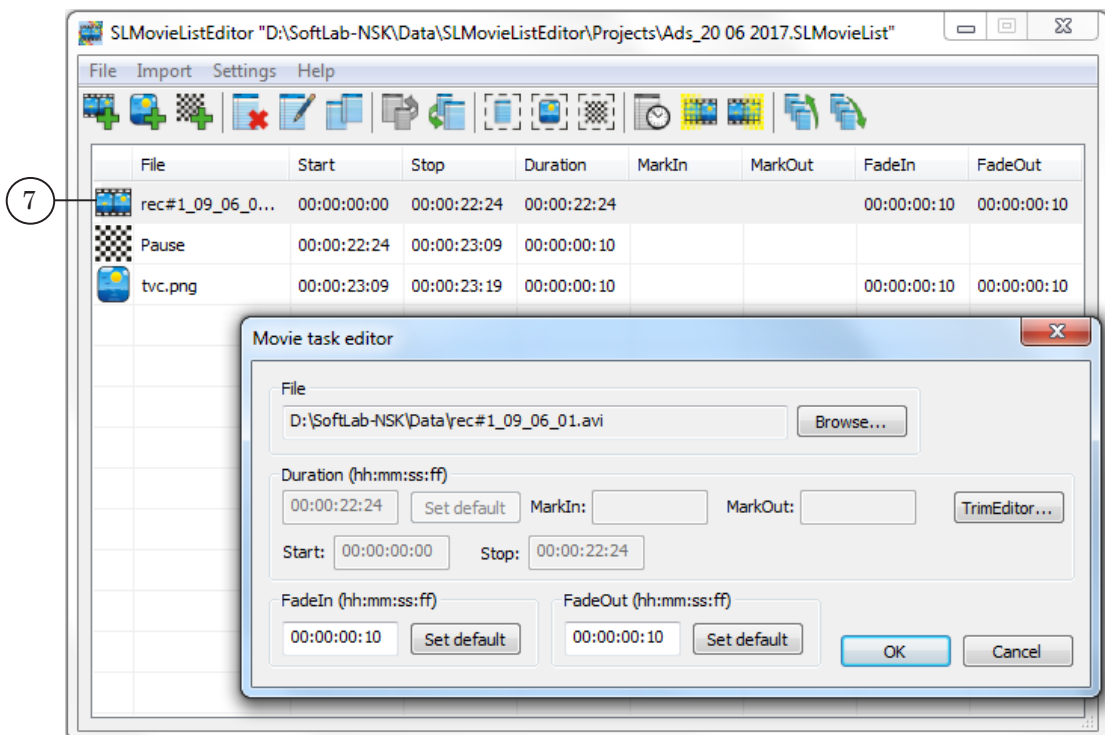


4. Create a task list. To add files and pauses to the list, use the corresponding toolbar button:
  - Add movie (4);
  - Add picture (5);
  - Add pause (6).

The order of the files in the list establishes broadcast order. The list order can be changed at any point while editing the project.

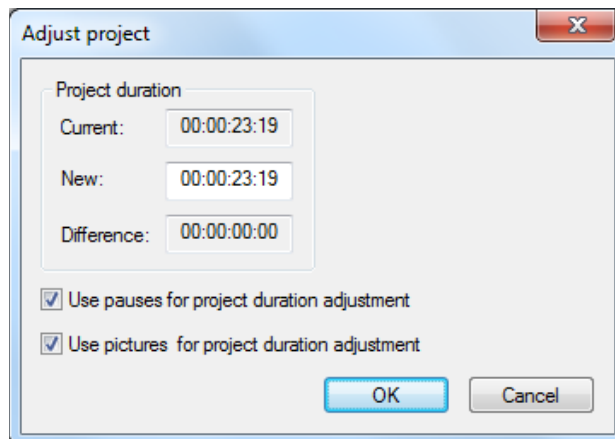


5. Set the duration and other parameters of files and pauses. Double click the necessary row (7) to open the settings window.

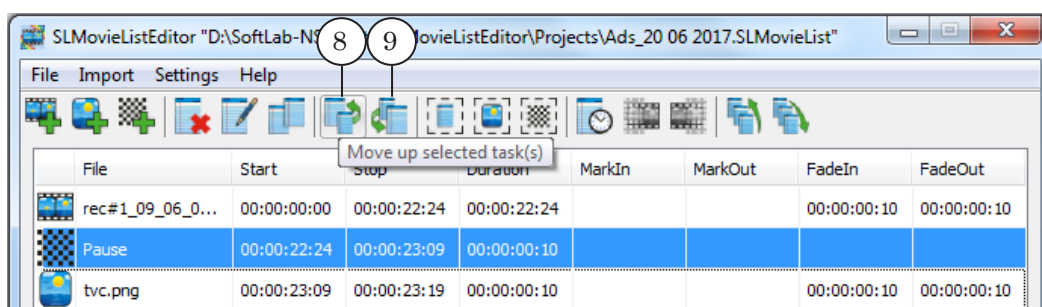




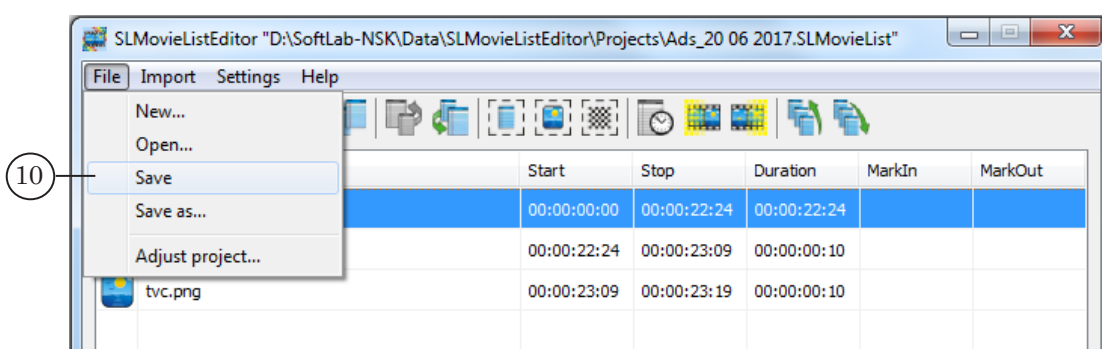
6. If the full duration of the entire project is known, set the necessary value: use the File > Adjust project function. When using it the duration of the individual task items (pauses and/or images) will be automatically corrected according to the set value.



7. Use the buttons (8, 9) in order to change the task item order.



8. To save the task, select File > Save (10). The task will be saved into a file with the SLMovieList extension.



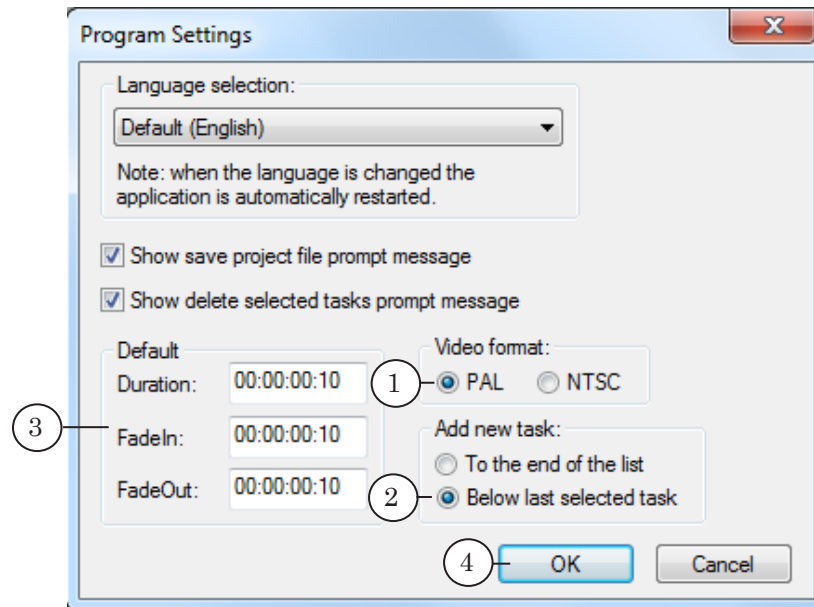
**Note:** If the file containing video clips or images is saved in the same folder as the task file or its subfolder, then in the XML task file the relative path from the task file folder is set. If the file containing video clips or images is saved in a different folder the full path to the folder is set.



## 2. Work parameter settings

- ✓ **Important:** Save the current project before opening the Program Settings window, otherwise all changes might be lost.

1. Open the Program Settings window by using the Settings menu > Program Settings command.

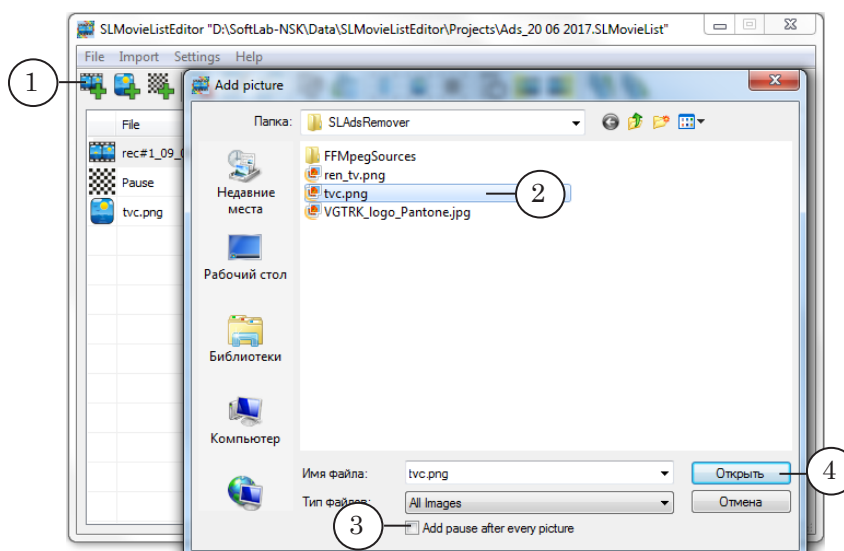


2. In the Video format group choose the necessary TV standard – for example PAL (1).
3. In the Add new task group choose the position in which new files will be added to the list (2).
4. In the Default (3) group set the default settings for: duration of pauses and image displays, duration of starting and ending transitions for video clips and images.
5. Press OK (4) to save all changes and close the window.

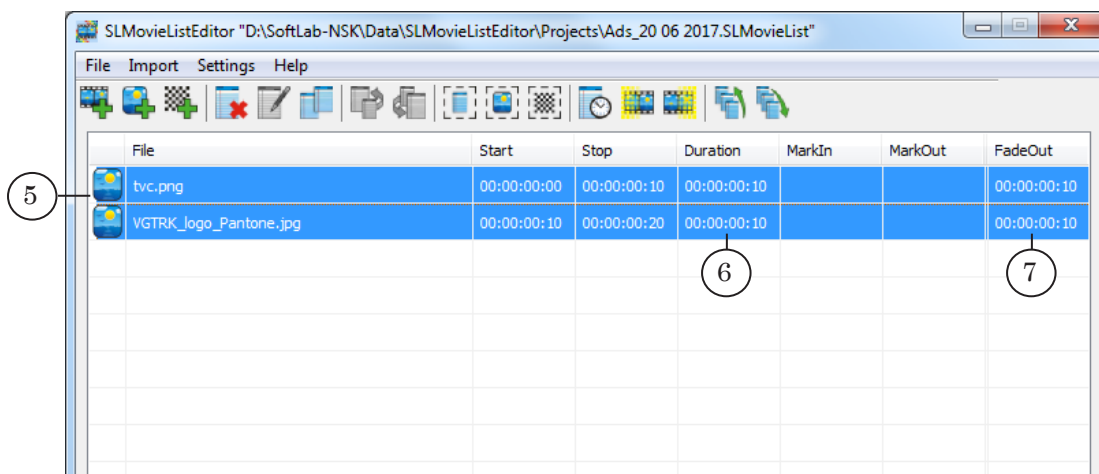


### 3. Adding graphical files and display settings

1. In order to add a graphical file to the task list, press Add picture (1).
2. In the opened window select the necessary file(s) (2). If it is necessary to add a pause after each image, flag the necessary option (3). Press Open (4).



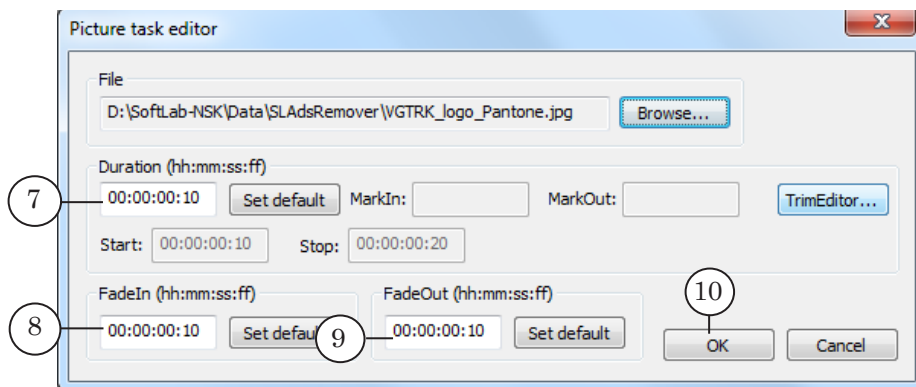
3. The selected files will be added to the task table (5). The display duration (6) and the starting and ending transition duration (7) will be set in accordance to the default settings (set in the Program Settings window).



4. To change the parameters of an image task item, double-click on the necessary row (or select the necessary row and press Edit).



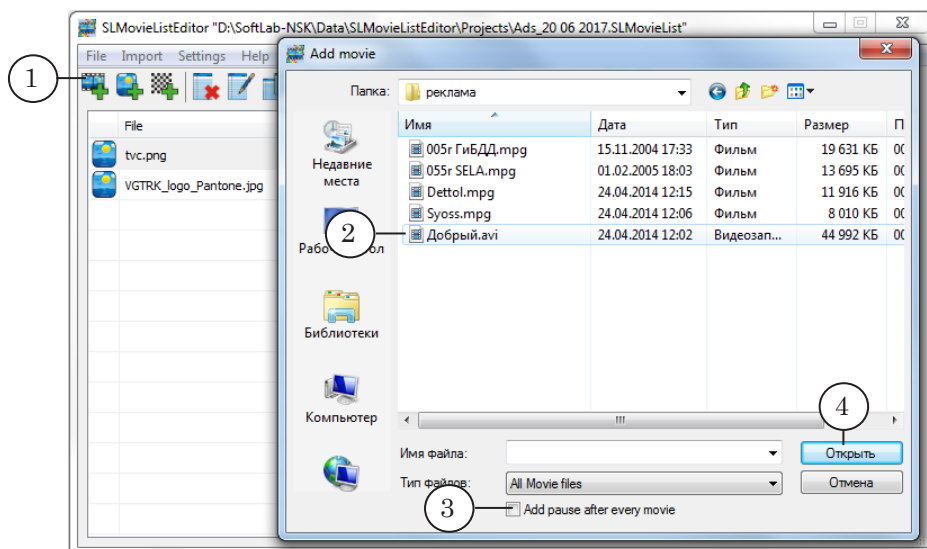
5. In the Picture task editor window set the necessary display duration (7) and the duration of the starting (8) and ending (9) transitions.
6. Press OK (10) to save all changes and close the window.



## 4. Adding video clips and playback settings

### 4.1. Adding a video clip

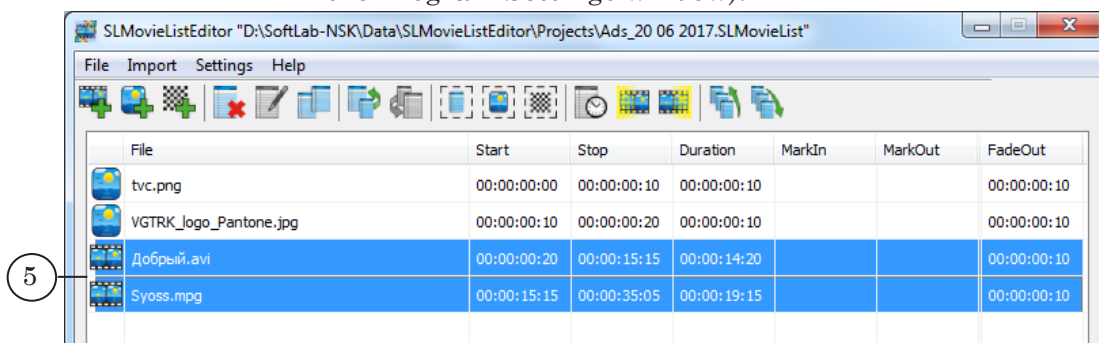
1. To add a video clip to the task list press Add movie (1).
2. In the opened window select the necessary file(s) (2). If it is necessary to add a pause after each clip, flag the necessary option (3). Press Open (4).







- The selected files will be added to the task table (5). The playback duration and the starting and ending transition duration will be set in accordance to the default settings (set in the Program Settings window).



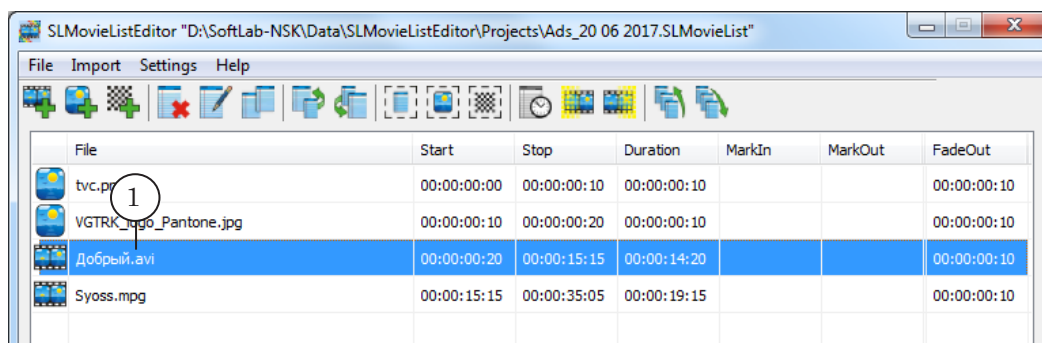
- If it is necessary to edit the playback parameters of a video clip, open the Movie task editor window by double-clicking on the necessary row. Possible options:
  - if you double-click the row in the File column the TrimEditor window will open (see section below). Using the TrimEditor you can set a fragment of the clip for playback, as well as adjust other playback parameters (brightness, contrast, volume, etc.);
  - if you double-click the row in any other column the Movie task editor window will open (see the «4.3. Movie task editor window» section below) in which you can choose another file, set the duration of the transitions, and from which you can call the TrimEditor.

## 4.2. TrimEditor

Using the TrimEditor you can change the clip duration by marking a fragment of the clip for playback as well as manage other clip parameters (brightness, contrast, volume, etc.).

**Note:** For more information on working with the TrimEditor see the [«TrimEditor: audio and video file information, marking a fragment, editing SLIni files»](#).

- To open the TrimEditor, double-click on the File column (1).

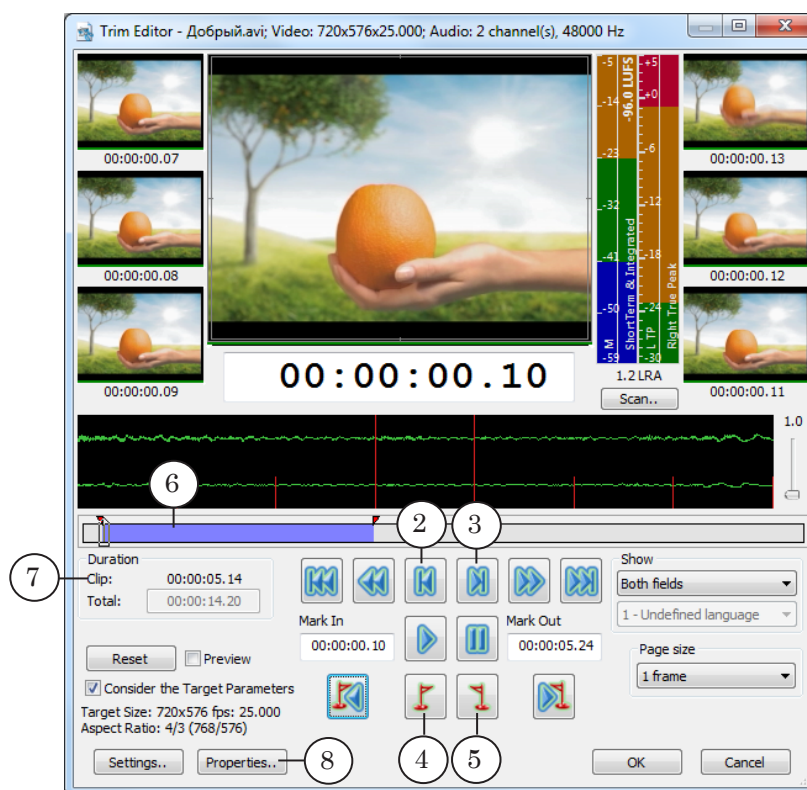


- Mark the fragment for playback by using the Mark In

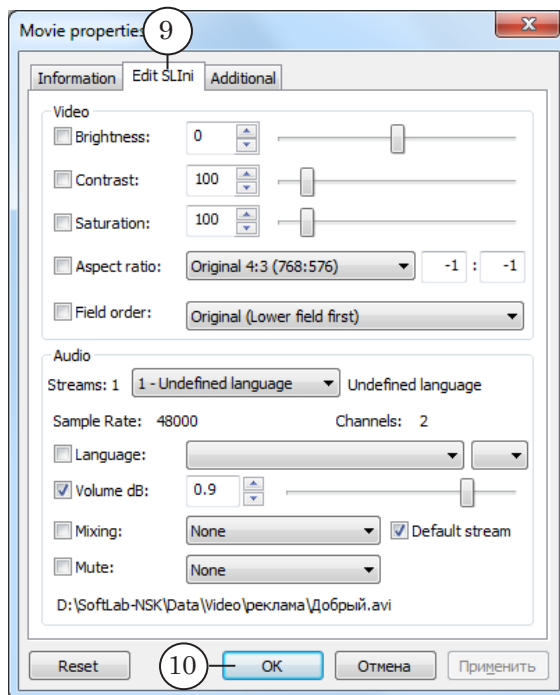


(fragment start) and Mark Out (end). To do this complete the following:

1. Look through the clip (for example by using the commands for frame-by-frame playback (2, 3)) and find the starting frame of the fragment.



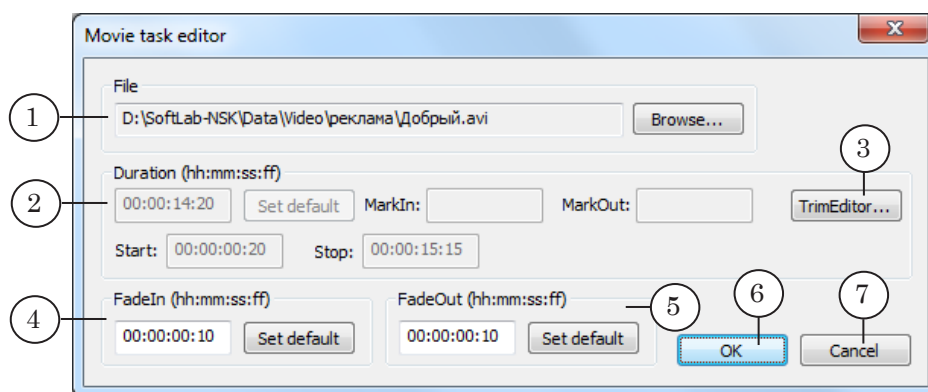
2. Press button (4) to set MarkIn.
  3. Find the ending frame of the fragment.
  4. Press button (5) to set MarkOut.
  5. The marked fragment will appear marked in blue (6), and the duration of the fragment is displayed in the Clip (7) field.
3. If necessary manage the special parameters of clip playback. To do this:
    1. In the TrimEditor press Properties (8).
    2. In the opened window select the Edit SLIni file (9) tab and manage the necessary parameters.
    3. Press OK (10) to save all changes.



**Note:** The SLIni file is automatically saved to the folder containing the video file. While the files are located in the same folder, the SLIni-file settings are used when playing the video.

### 4.3. Movie task editor window

To open the Movie task editor window, double-click on any column except File.

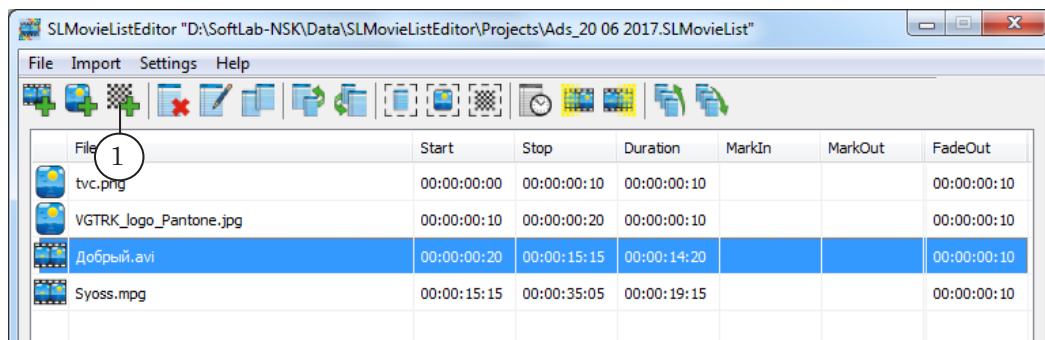


Movie task editor window. Assignment of control elements:  
1 – select file; 2 – file duration; 3 – open TrimEditor; 4 – edit starting transition; 5 – edit ending transition; 6 – exit Edit window and save all changes; 7 – exit the window without saving changes.

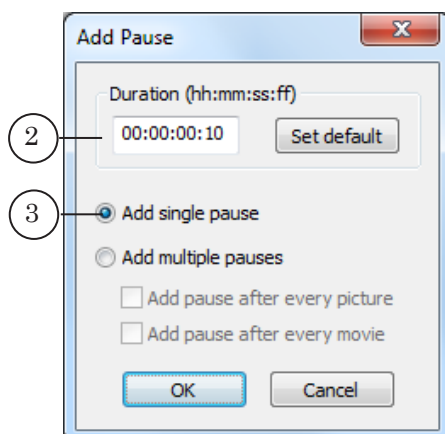


## 5. Adding pauses to the task list

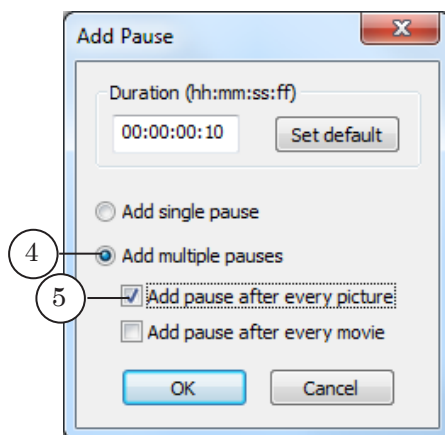
1. To add a pause to the task list press Add pause (1).



2. In the opened window, fill out the Duration (hh:mm:ss:ff) field (2) with the pause duration.
3. If it necessary to add a single pause, select the corresponding option (3) and close the window by pressing OK. The pause will be added to the end of the list or after a selected task item (depending on the program settings).



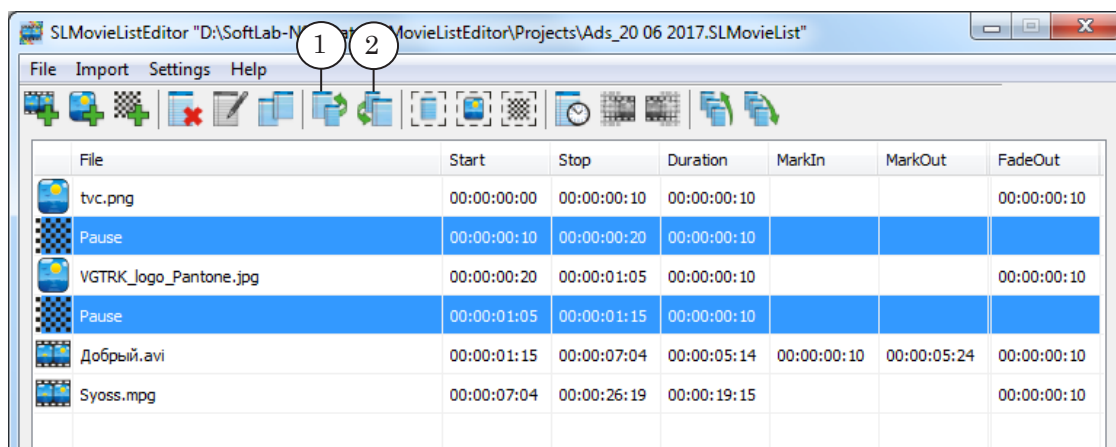
4. If it is necessary to add several pauses at once: one after each image and/or clip, select (4) and flag (5) the necessary options. Press OK. The pauses will be added after each image/clip depending on the settings.



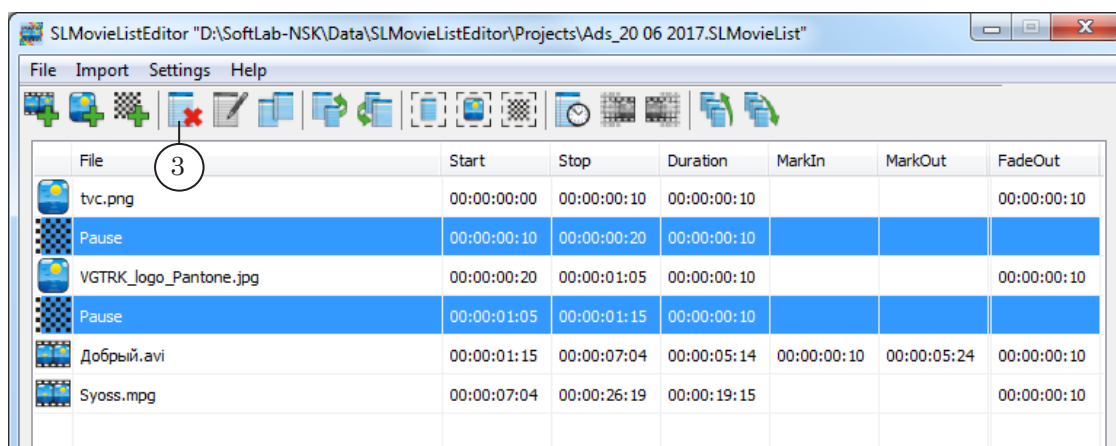


## 6. Editing the list

1. If it is necessary to change the task item order, select a row (or several rows) and use the buttons Move up/down selected task(s) (1, 2).



2. To delete an item from the list, select the task item and press Delete selected task(s) (3).



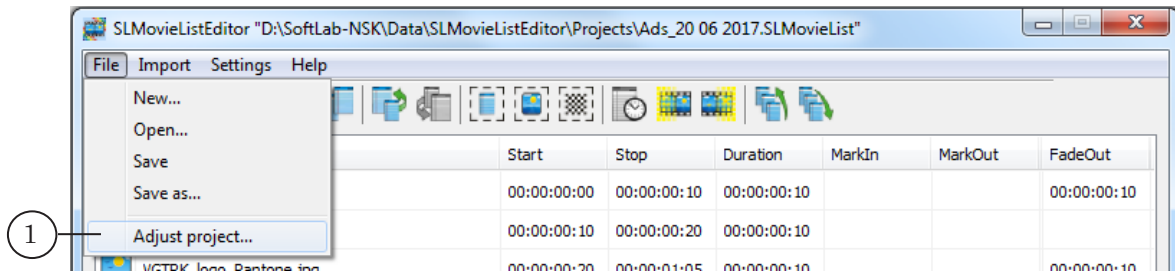
## 7. Editing Overall Duration

The program offers the option to set the necessary overall duration of the task.

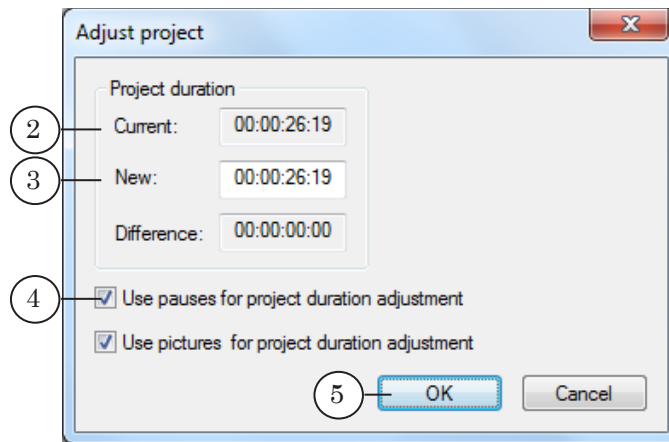
The overall duration can be changed via changing the duration of all the pauses and/or images simultaneously.

**Note:** The overall duration can not be shorter than the length of all the video clips in the task.

1. To change the overall duration open the Adjust Project window using the File > Adjust Project (1) command.



2. The current duration of the project is displayed in the Current field (2).



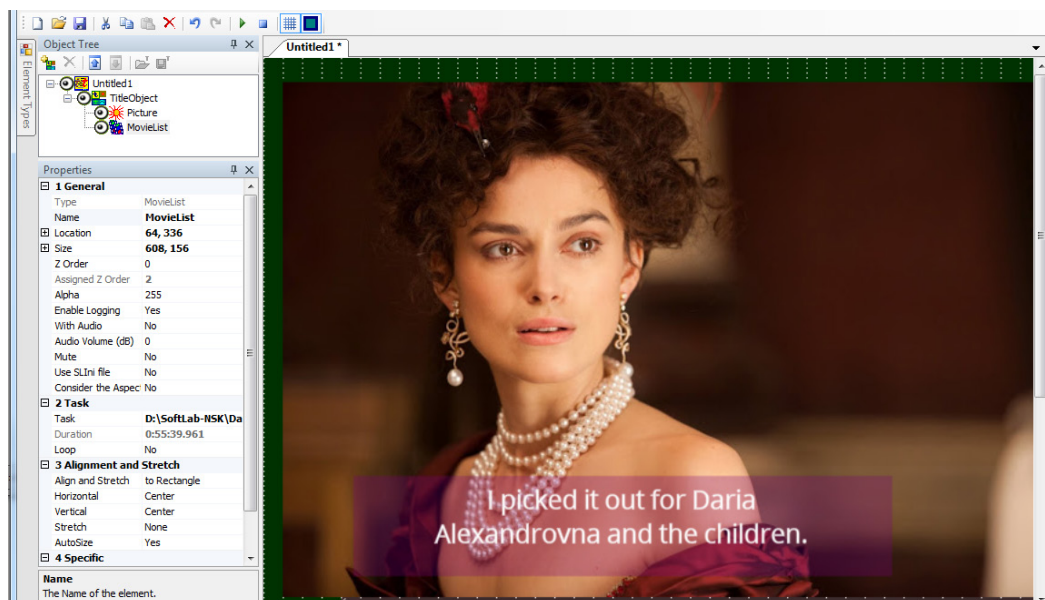
3. In the New field set the necessary value (3).
4. Select the duration of which task items will be changed by flagging the appropriate options (4).
5. Press OK (5) to confirm changes.
6. The duration of the images and/or pauses will have been changed, and as such the overall duration will change.



# Import Subtitles

## 1. General procedure

The ForwardT Software allows the user to set up a broadcast of a movie with external subtitles. The management of the simultaneous broadcast and the subtitles is done in FDO nAir.



In order to display the subtitles, a title project containing the MovieList title element needs to be opened in FDO nAir. This element will determine the area of the screen in which the subtitles will be displayed. The task for the element contains a list of graphical files with separate lines of subtitle text and pauses between them.

The SLMovieListEditor offers the option to automatically create a task based on a SRT file with the subtitles (see section below) – the Create Subtitles function.

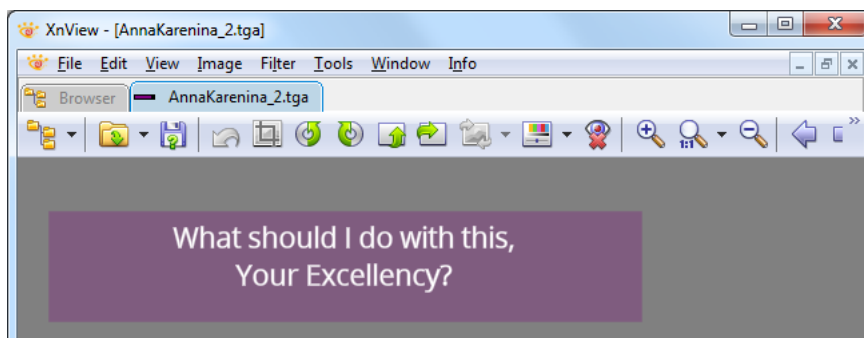
The function result is that a text file containing the subtitle text is converted to a series of graphical files in the TGA format and a list of those files and the pauses in between them. When saving the project the list automatically converts into an XML task file for the MovieList element.

The screenshot shows the SLMovieListEditor software interface. The window title is "SLMovieListEditor 'D:\SoftLab-NSK\Data\SLMovieListEditor\Projects\annakarenina.SLMovieList'". The interface includes a menu bar (File, Import, Settings, Help) and a toolbar. Below the toolbar is a table with the following columns: File, Start, Stop, Duration, MarkIn, MarkOut, and FadeOut.

File	Start	Stop	Duration	MarkIn	MarkOut	FadeOut
Pause	00:00:00:00	00:00:06:00	00:00:06:00			
AnnaKarenina_00_00_06_000.tga	00:00:06:00	00:00:12:01	00:00:06:01			00:00:00:10
Pause	00:00:12:01	00:01:52:22	00:01:40:21			
AnnaKarenina_00_01_52_880.tga	00:01:52:22	00:01:55:23	00:00:03:01			00:00:00:10
Pause	00:01:55:23	00:01:56:00	00:00:00:02			
AnnaKarenina_00_01_56_000.tga	00:01:56:00	00:01:57:05	00:00:01:05			00:00:00:10



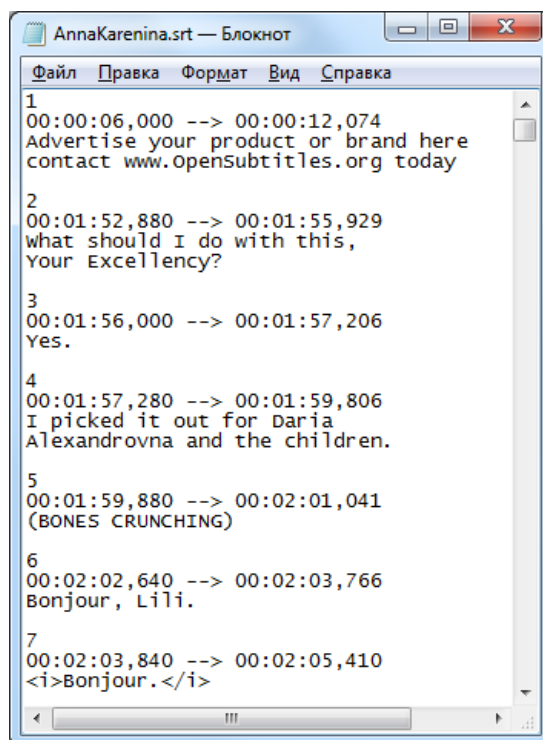
One TGA file corresponds to one block of text from the subtitle text file.



## 2. Preparation

To create a subtitle task using the SLMovieListEditor, prepare the following beforehand:

1. The subtitle file – a SRT file.



**Note:** The subtitle file contains the subtitle text broken into blocks in accordance to the time cues and the time cues themselves and can contain additional information. There are a variety of formats to present this information. The SLMovieListEditor program supports the SRT format. You can create a SRT file using the Subtitle Workshop (third-party program), for example.

For more information on working with subtitles, subtitle formats, subtitle files, etc, visit the following link: <http://en.wikipedia.org/wiki/Subrip>.

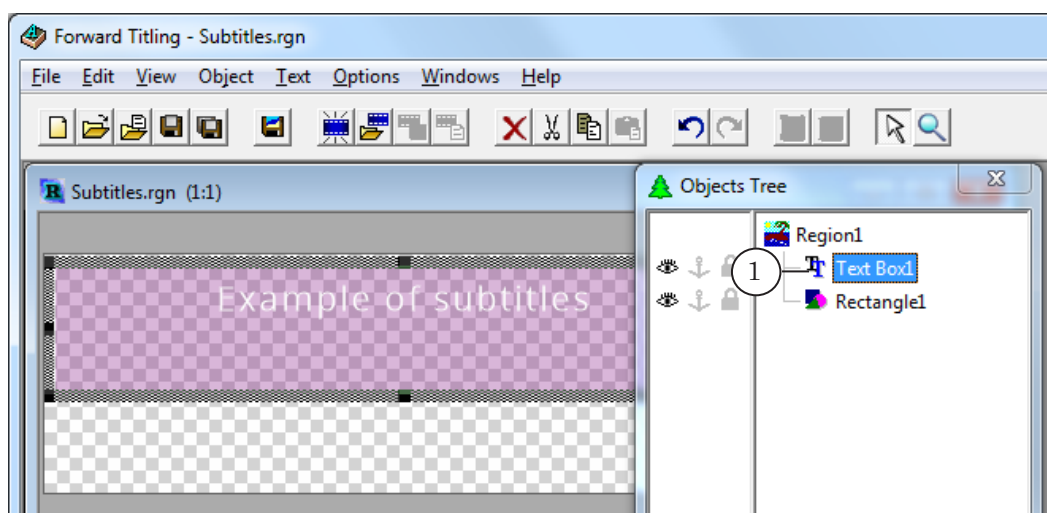




2. The region file – a RGN file. The region must contain a TextBox type object (1).

The region is used as a template to format the image – a rectangle containing the subtitles.

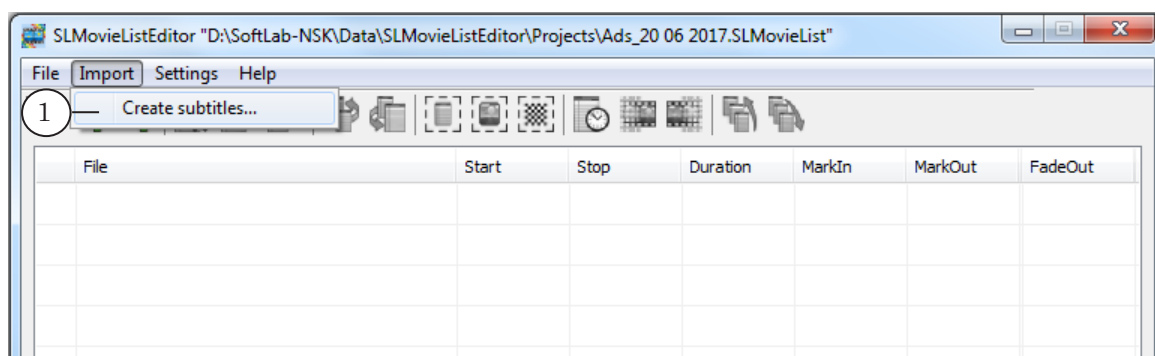
The rectangle parameters, such as color and background transparency, as well as the text format parameters: font, color, paragraph parameters, etc, will be set in accordance to this template.



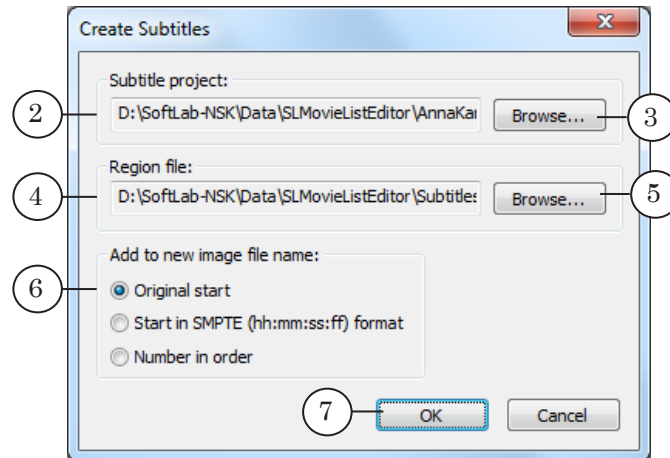
**Note:** The region file is a file created in the Forward Titling program which is included in the ForwardT Software (see the user's guide: «[Forward Titling: Graphical editor](#)»). The region file has the rgn extension.

### 3. Create Subtitles Function

1. In the program's main window, select Import > Create Subtitles (1).



2. In the opened window set the full path to the SRT subtitle file (2). To open a standard file selection window press Browse (3).
3. Set the full path to the RGN file with the image template (4). To open a standard file selection window press Browse (5).



4. Choose how to name the resulting TGA files (6).

The graphical files will be named automatically. The basis of their name will be the name of the original SRT file. An underline symbol and a set of numbers will be added to the end. The set of numbers can be the block order number or the start time of the block, depending on the user's choice. The placement of the TGA files is chosen automatically. They will be saved into the folder containing the project open in the main window at the time of importing.

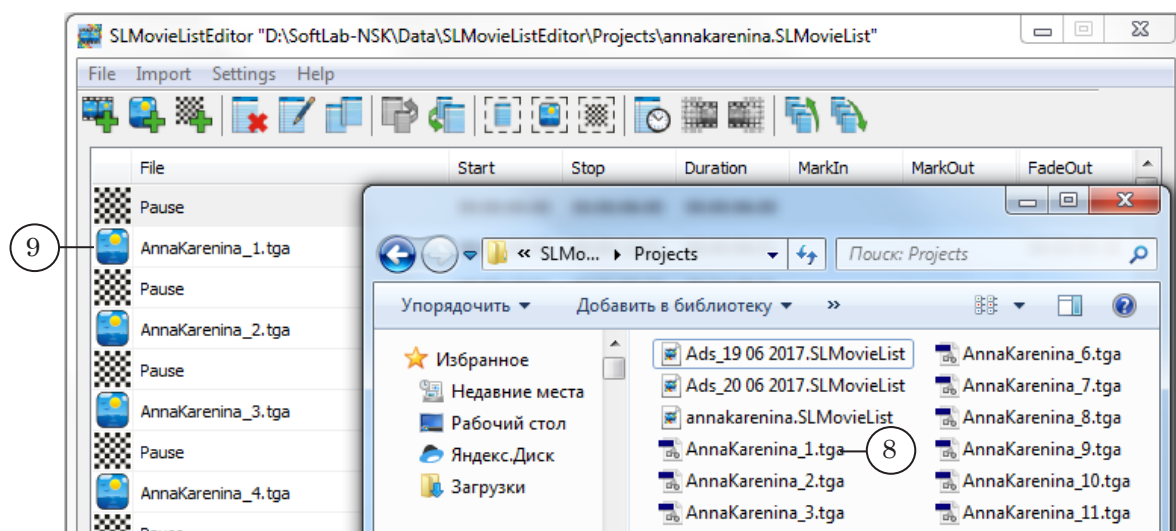
➔ **Example:** Let's assume the subtitle file's name is AnnaKarenina.srt. The image below shows the possible options for graphical file names in this scenario:

- (1) – the block start time in the hh:mm:ss:msmsms format (Start cue from original project) will be added to the original file name;
- (2) – the block start time in the hh:mm:ss:frames format (Start cue in SMPTE format) will be added to the original file name;
- (3) – the block order number (Order number) will be added to the original file name.

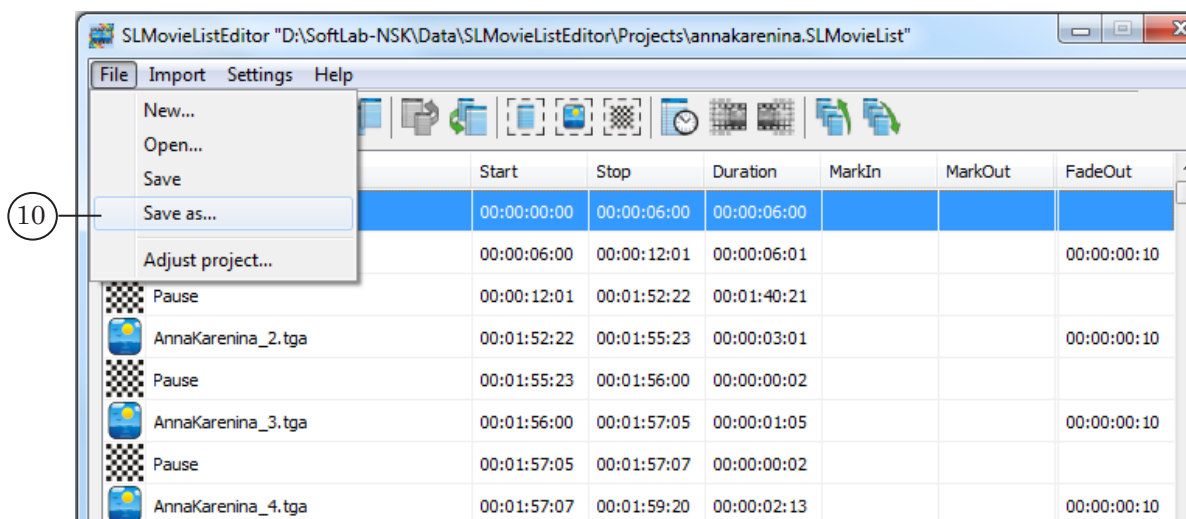
File	Start	Stop	Duration	MarkIn	MarkOut	FadeOut
Pause	00:00:00:00	00:00:06:00	00:00:06:00			
1 AnnaKarenina_00_00_06_000.tga	00:00:06:00	00:00:12:01	00:00:06:01			00:00:00:10
Pause	00:00:12:01	00:01:52:22	00:01:40:21			
2 AnnaKarenina_00_01_52_880.tga	00:01:52:22	00:01:55:23	00:00:03:01			00:00:00:10
File	Start	Stop	Duration	MarkIn	MarkOut	FadeOut
Pause	00:00:00:00	00:00:06:00	00:00:06:00			
2 AnnaKarenina_00_00_06_00.tga	00:00:06:00	00:00:12:01	00:00:06:01			00:00:00:10
Pause	00:00:12:01	00:01:52:22	00:01:40:21			
2 AnnaKarenina_00_01_52_22.tga	00:01:52:22	00:01:55:23	00:00:03:01			00:00:00:10
File	Start	Stop	Duration	MarkIn	MarkOut	FadeOut
Pause	00:00:00:00	00:00:06:00	00:00:06:00			
3 AnnaKarenina_1.tga	00:00:06:00	00:00:12:01	00:00:06:01			00:00:00:10
Pause	00:00:12:01	00:01:52:22	00:01:40:21			



5. Press OK (7) to close the window and start importing.
6. The result of the import will be the generation of the TGA files (8) in accordance to the subtitle blocks in the original SRT file. The task table will list them and the pauses in between them (9). The display duration of each image with a subtitle block will be the duration set for that block in the SRT file. The files will be saved into the folder containing the task file.



7. Save the task. Select File > Save (10).





## Addendum. XML scheme structure of the task file

A task for the MovieList title element is a XML file with the SLMovieList extension. It contains all the necessary information to play a series of video clips, images, and pauses: the play order, the file names, the display and playback durations, the durations of the transitions.

The file can be opened for viewing in any text editor: Notepad, for example.

Below is a XDR scheme for the task file \*.SLMovieList:

```
<?xml version="1.0"?>
<Schema name="http://x-schema:movieListSchema"
  xmlns="urn:schemas-microsoft-com:xml-dat"
  xmlns:dt="urn:schemas-microsoft-com:datatypes">
  <AttributeType name="fadeIn" dt:type="float"/>
  <AttributeType name="fadeOut" dt:type="float"/>
  <AttributeType name="duration" dt:type="float"/>
  <AttributeType name="TCF" dt:type="enumeration"dt:values="sec ms"/>
  <ElementType name="value" dt:type="string"/>
  <ElementType name="image" model="closed">
    <element type="value"/>
    <attribute type="fadeIn"/>
    <attribute type="fadeOut"/>
    <attribute type="duration"/>
  </ElementType>
  <ElementType name="movie" model="closed">
    <element type="value"/>
    <attribute type="fadeIn"/>
    <attribute type="fadeOut"/>
  </ElementType>
  <ElementType name="pause" model="closed">
    <attribute type="duration"/>
  </ElementType>
  <ElementType name="movieList" model="closed">
    <element type="image" minOccurs="0" maxOccurs="*" />
    <element type="movie" minOccurs="0" maxOccurs="*" />
    <element type="pause" minOccurs="0" maxOccurs="*" />
    <attribute type="TCF"/>
  </ElementType>
</Schema>
```

Example: The image shows an example task for the MovieList title element. The file is open in Notepad.

```
Ads_19 06 2017.SLMovieList — Блокнот
Файл  Правка  Формат  Вид  Справка
<?xml version="1.0" encoding="utf-16" standalone="yes"?>
<movieList xmlns="http://x-schema:movieListSchema" TCF="sec">
  <movie fadeIn="0.4" fadeOut="0.4">
    <value>D:\SoftLab-NSK\Data\video\реклама\добрый. avi</value>
  </movie>
  <pause duration="0.4" />
  <image duration="0.4" fadeIn="0.4" fadeOut="0.4">
    <value>D:\SoftLab-NSK\Data\SLAdsRemover\tvc. png</value>
  </image>
</movieList>
```

The numbers indicate:

- 1 – the opening tag of the root element;
- 2 – element containing a description of a video clip;
- 3 – element containing a description of a pause;
- 4 – element containing a description of an image.



---

## Useful Links

### **Forward T Product Line: Description, Software Delivery, Documentation, Ready Solutions**

<http://www.softlab.tv/forward/index.html>

### **Tech Support**

e-mail: [forward@sl.iae.nsk.su](mailto:forward@sl.iae.nsk.su)

[forward@softlab-nsk.com](mailto:forward@softlab-nsk.com)

[forward@softlab.tv](mailto:forward@softlab.tv)

### **Forums**

<http://www.softlab-nsk.com/forum> (currently available in Russian only)

### **Documentation for more information:**

1. [«Forward Titling. Graphical editor»](#).
2. [«FDTitle Designer. Title project editor»](#).
3. [«TrimEditor: audio and video file information, marking a fragment, editing SLIni files»](#).
4. [«FDOnAir: Broadcast automation»](#).

Translation from  
March 24, 2017

© SoftLab-NSK Ltd.

---