

TS1_Now - displaying the title of the "Now showing" movie

[General description](#)

[Script properties](#)

[Movie title in schedule comments](#)

[Movie title in SLIni file](#)

[Licensing the TS2 Now script](#)

[TS2Now s1 sample](#)

[TS2Now s2 sample](#)

[Customizing script settings for your working project](#)

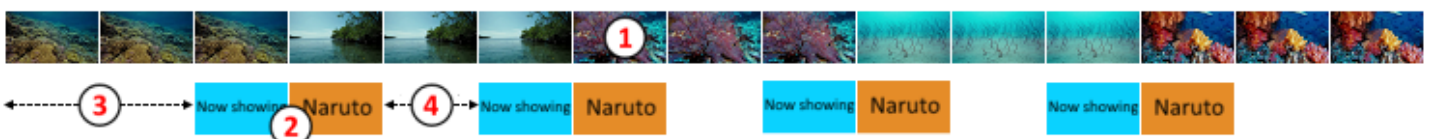
General description

The title object with a script (script) TS2_Now is designed to display the title of the movie that is currently on air on a TV channel.



Click to watch video

Before showing the title of the movie the additional text string in the style of "Now showing" is displayed. Additional text string and the title of the movie are displayed sequentially with the animated background.



The sequence "additional text string + movie title + animated background" is a block (marked 2 in the figure), which is repeated in a loop throughout the entire movie (marked 1 in the figure). There is a configurable gap between block repeats (marked 4 in the figure). The start of the block occurs with an offset (marked 3 in the figure) from the beginning of the movie.

The movie may be divided into parts.

The number of repeats of a block is an integer that is calculated by the script itself based on the duration of the movie (or part of it). The offset between the end of the last block and the end of the movie is not fixed.

The block is shown in the following cases:

1. Before the next movie in the OnAir3 schedule there is a comment that begins with special symbols.
2. In the directory with the next movie there is a metadata file (*.SLini) with the same name and a predefined field in it.

The text of the additional string ("Now showing") does not change between movies. It can be specified in the following ways:

1. Can be set in the script property ("Now").
2. Inserted into the animated background during its editing.

The movie title is a changing string. Can be specified in the following ways:

1. As a comment in the schedule before the next film. The comment must begin with a special symbols (script property "Comment label", by default is ##).
2. In the file with movie metadata (*.SLini). The SLini file must be in the same directory and have the same name as the movie. In the SLini file the string with title of the movie is taken from the field with the title specified in the script property "SLini key" (by default is "NowShowing").

Both options for the movie title are checked, priority is from the comment.

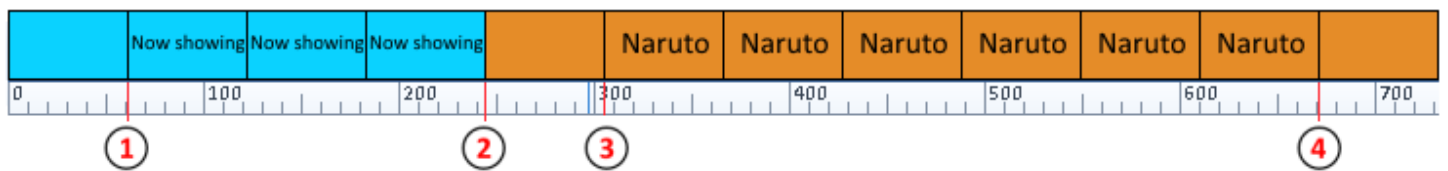
Important! The string with movie title is shown "as is" without any changes.

The additional string and movie title may contain formatting tags.

Several instances of the TS2_Now script can be launched simultaneously, each with its own settings.

Script properties

• **Background** - the file of animated background. The following containers for files with an alpha channel are supported: AVI, MOV, MP4, FLV.



- **Start NS** - the start of displaying the additional string "Now showing". The value is the timecode in the format HH:MM:SS.FF relative to the beginning of the animated background (marked 1 in the figure). By default is 00:00:01.00.
- **End NS** - the end of displaying of the additional string "Now showing". The value is the timecode in the format HH:MM:SS.FF relative to the beginning of the animated background (marked 2 in the figure). By default is 00:00:02.00.
- **Start MT** - the start of displaying a string with the title of the movie. The value is the timecode in the format HH:MM:SS.FF relative to the beginning of the animated background (marked 3 in the figure). By default is 00:00:03.00.
- **End MT** - the end of displaying a string with the title of the movie. The value is the timecode in the format HH:MM:SS.KK relative to the beginning of the animated background (marked 4 in the figure). By default is 00:00:04.00.

Important! For an animated background file the parameters Start NS, End NS, Start MT and End MT are specified once when setting up the script and do not change during its operation.

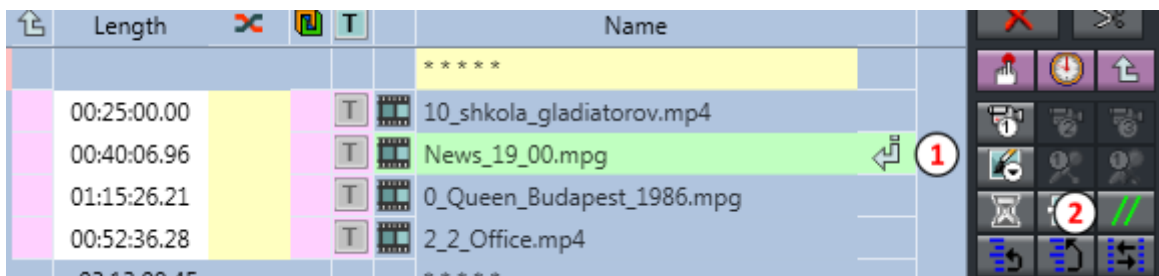
- **Now** - additional text string like "Now showing". By default is empty string. In this case it is considered that this additional string is inserted into the animated background and the script does not use the Start NS and End NS parameters.
- **Styles file** - a style collection file (*.efc) for displaying an additional string "Now showing" and the title of the movie.
- **NS style** - style index for the additional string "Now showing". By default is 0.
- **MT style** - style index for the movie title. By default is 0.
- **Comments label** - symbols at the beginning of a comment in the OnAir3 schedule to indicate the title of the movie. By default is ##. For example: ## Naruto.
- **SLIni key** - the name of the key in the SLIni file for the title of the movie. The default is "NowShowing".
- **Direction** - the direction of motion of the additional text string "Now showing" and the title of the movie. Values: right, up, down, none. By default is "right".

Important! The speed at which text strings appear is set in the corresponding title elements. The display duration is calculated based on the script settings Start NS, End NS, Start MT and End MT.

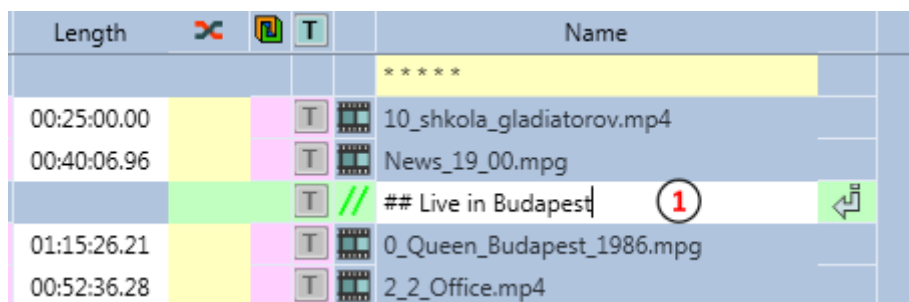
- **Offset** - offset from the beginning of the film (or part of it) to display the block "additional text string + movie title + animated background". Value is in seconds. By default is 1.
- **Gap** - the gap duration between repetitions of the "additional text string + movie title + animated background" block. Value is in seconds. By default is 1.

Movie title in schedule comments

The title of the film can be set as the comment in OnAir3 broadcast schedule.



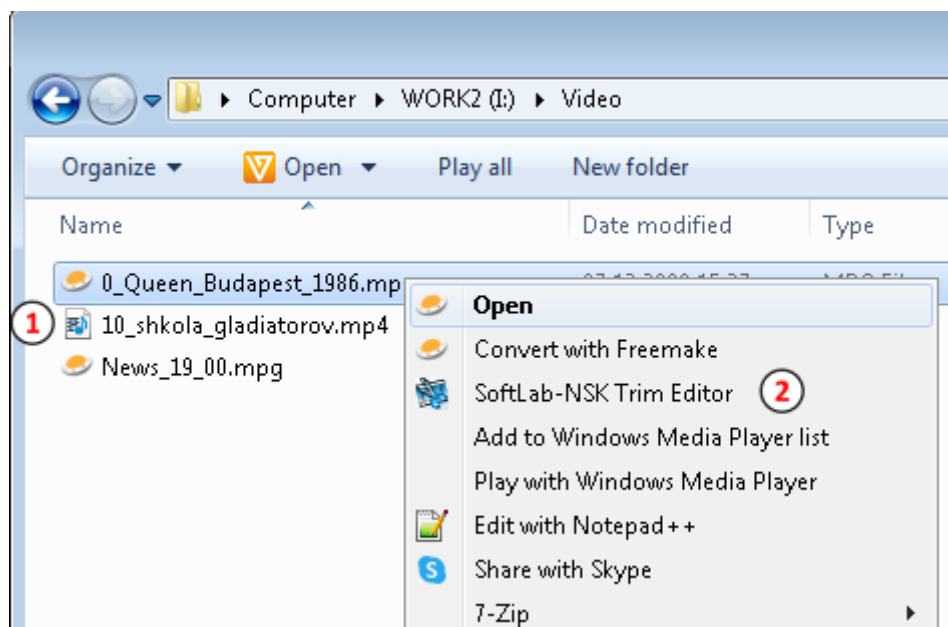
1. Set the edit position for inserting a comment (1). A new command will be added one line below. Click the "Comment" button (2).



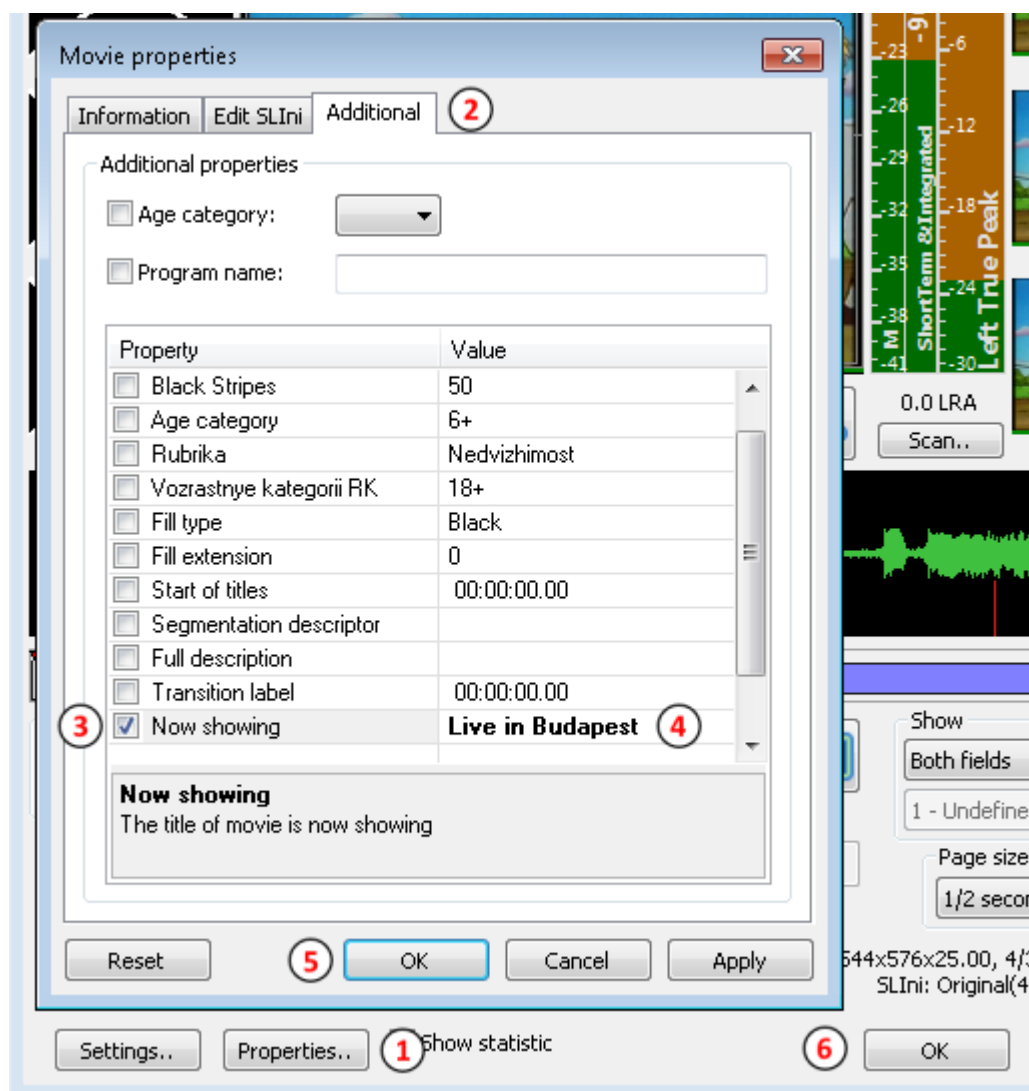
2. Enter the text of the comment (1). It must begin with the special symbols specified in the "Comment label" script property (## by default).

Movie title in SLIni file

The title of the movie can be specified in the SLIni text file associated with this movie.

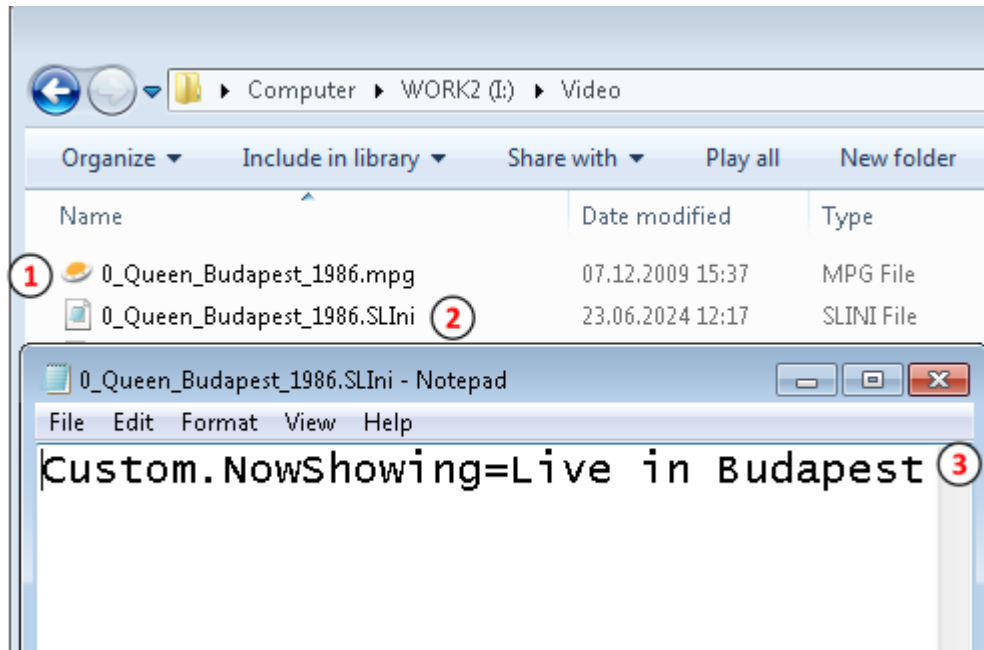


1. Select the movie for which you want to display the title (1), right-click on it. Select "SoftLab-NSK Trim Editor" in the menu (2).



2. In the main window of the TrimEditor click the "Properties.." button (1), select the "Additional" tab (2). Check the "Now showing" property (3) and specify the title of the

movie that will be shown (4). Close the "Movie properties" dialog - click "OK" (5). Close the TrimEditor - click "OK" (6).

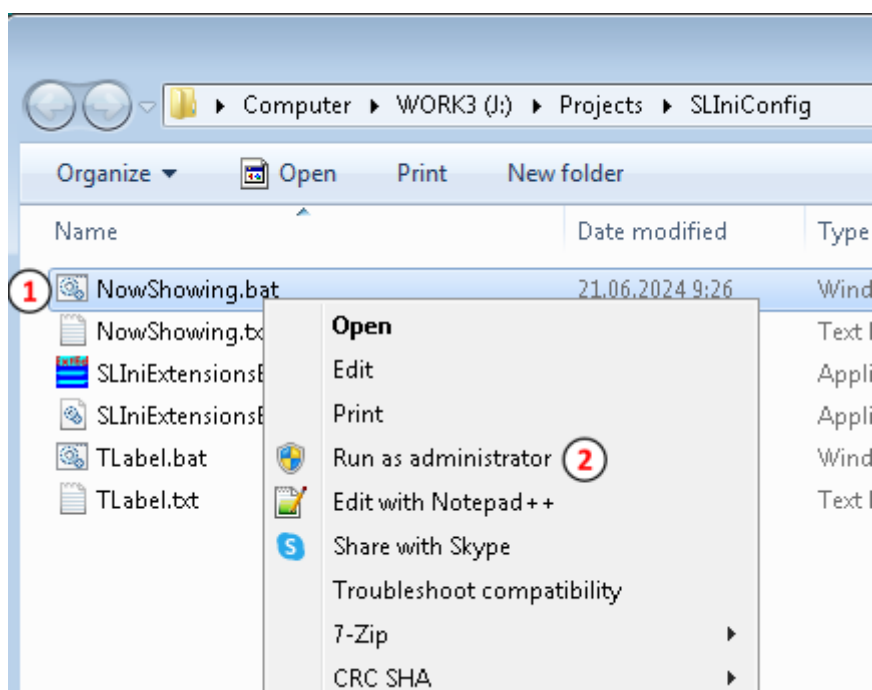


3. An SLIni file (2) with the same name is created in the folder with the movie (1). In the Custom.NowShowing field (the field name is configured in the "Key in SLIni" script property) the title of the movie is specified.
4. Repeat these steps for all movies that require the title to be displayed.

Important! The "Now showing" property for SLIni files must be created manually if it is not in the list of additional properties in the TrimEditor ("Properties" >> "Additional").

To create the "Now showing" property:

1. [Download](#) the special utility, unzip and copy it to your PC hard drive.



2. Run the NowShowing.bat file (1) with administrator rights (2).

Important! The "Now showing " property for SLIni files must be created on all servers on which the TS2_Now script will be used.

More details about working with TrimEditor and SLIni files can be found in the [document](#).

Licensing the TS2_Now script

To use the script, you must install Forward TT/TA/TP/TS/Lite software.

If Forward TT/TA/TP/TS software is installed then the script requires a license to use the paid TS2 library (SLScripts Set2). To obtain a temporary license, please contact the technical support department: forward@softlab.tv. When contacting please send the board or HASP key number.

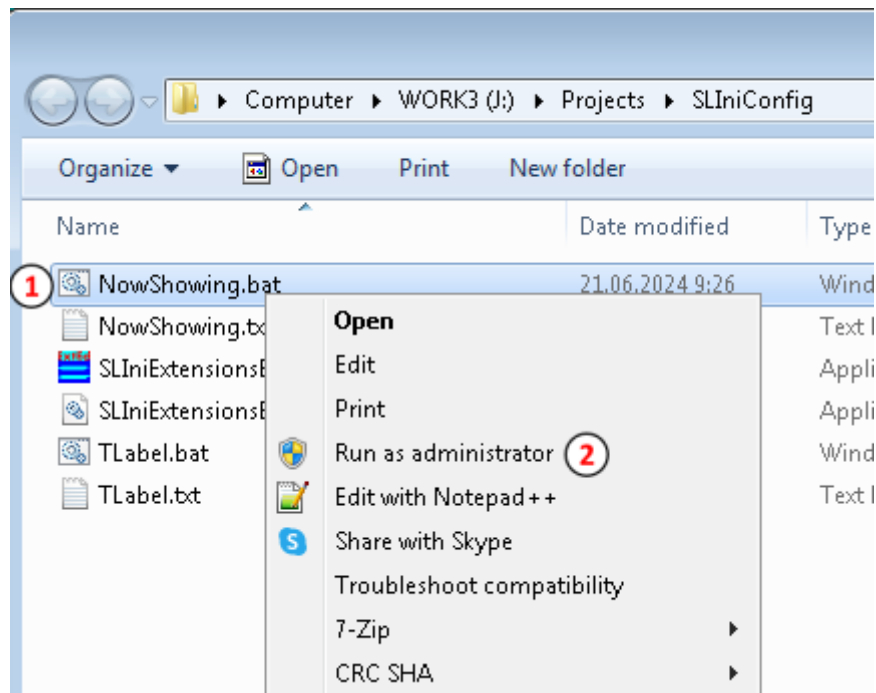
If Forward Lite software is installed, no licenses are required. About working in the "without i/o boards licenses" mode [here](#) (section "Viewing Data on the Computer Monitor without Using an FD300 Board. The SLTitlePreview Program").

TS2Now_s1 sample

In this sample:

- **The title of the movie is taken from the SLIni files and the comments in the schedule**
- **The additional text string (like "Now showing") is specified in the script settings**
- **Formatting tags are used for the movie title in the comment**

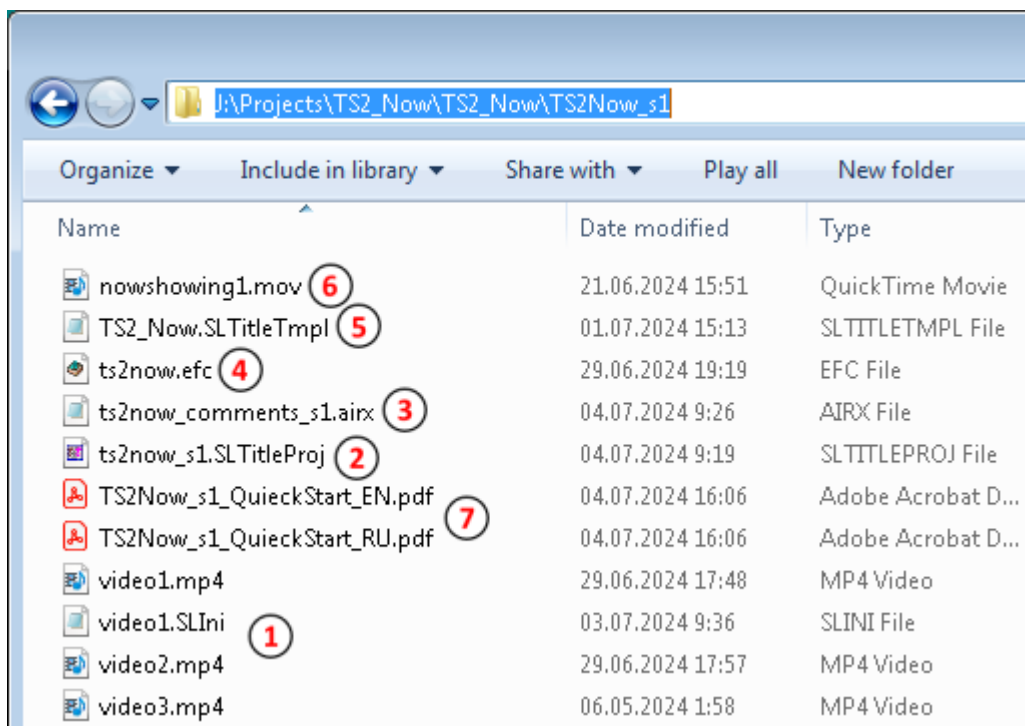
1. Install (if not installed) the latest version of Forward TT/TA/TP/TS/Lite software. Link to the installer and installation instructions [here](#).



2. Create the "Now showing" property: [download](#) the special utility, unzip and copy it to your PC hard drive. Run the NowShowing.bat file (1) with administrator rights (2).

Important! The "Now showing " property for SLIni files must be created on all servers on which the TS2_Now script will be used.

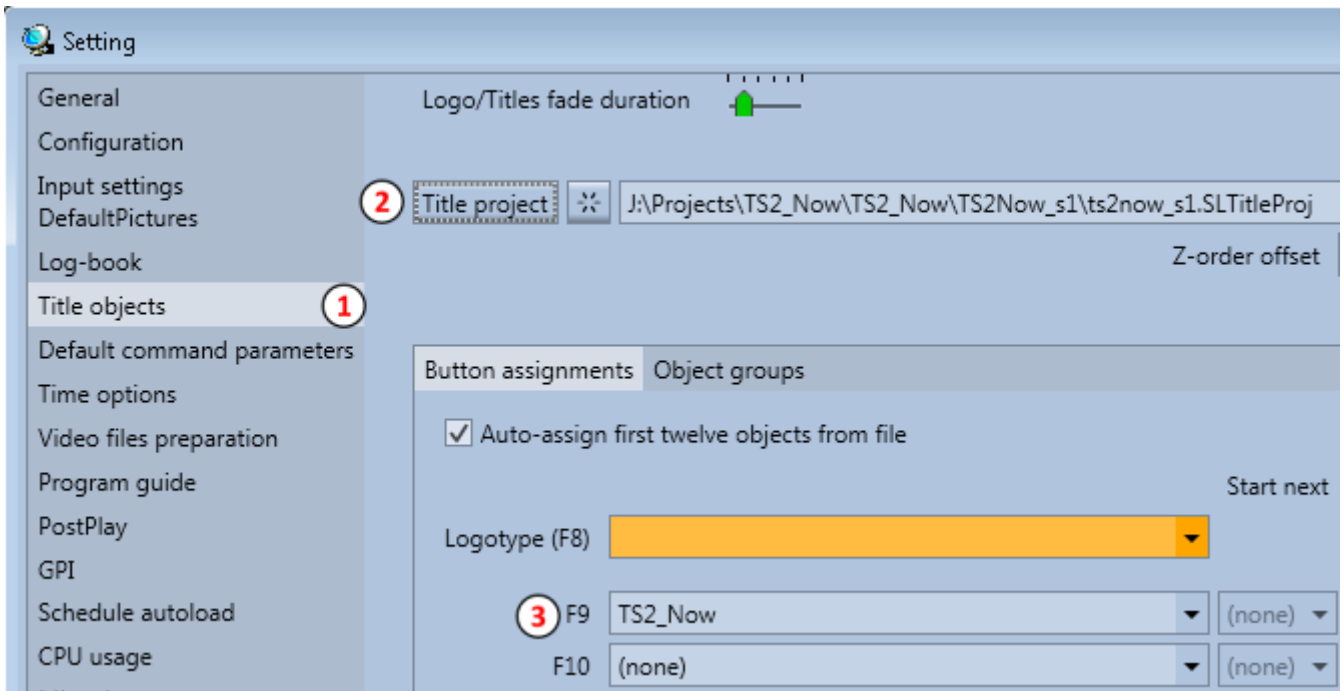
3. [Download](#) the sample, unzip and copy it to your computer's hard drive.



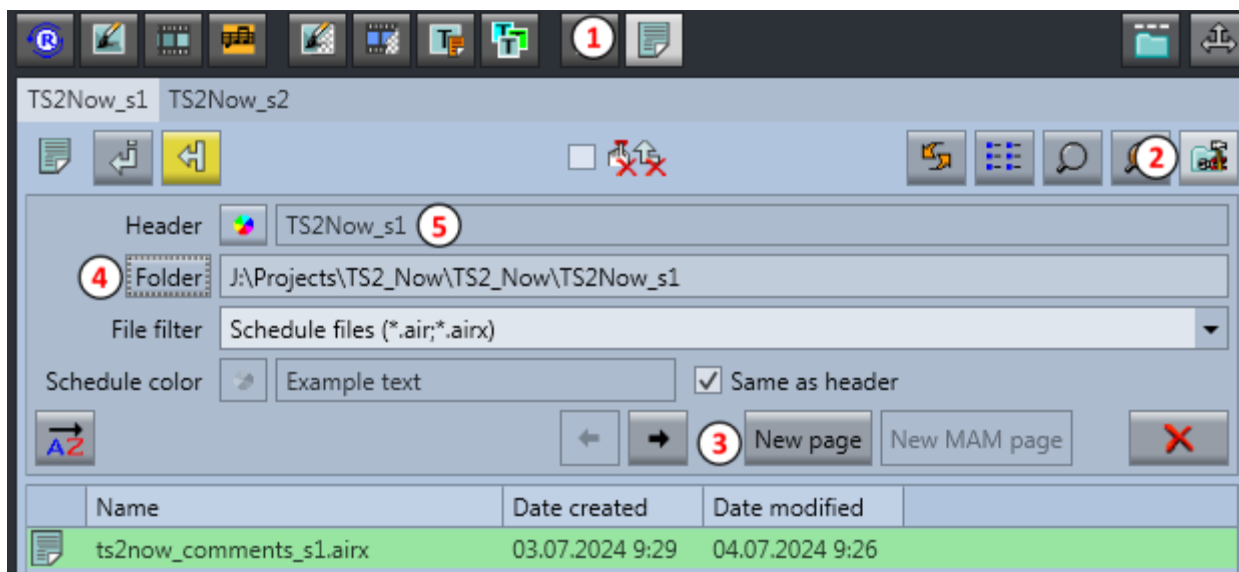
The ~\TS2Now_s1 directory contains the following files:

- movies for schedule; for video1.mp4 there is a pre-prepared SLIni file corresponding to it (1)
- title project (2)

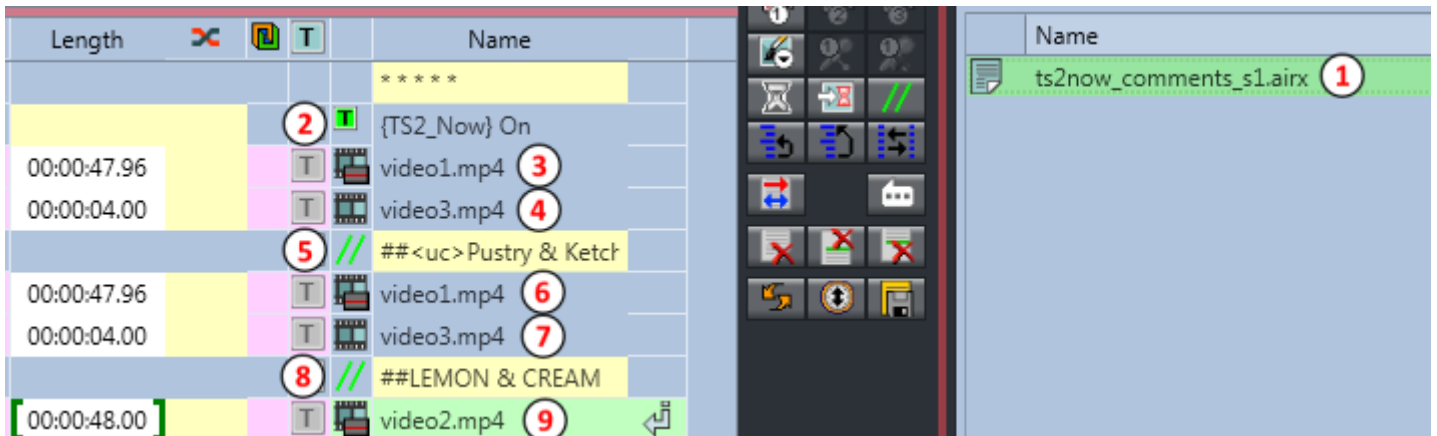
- schedule file (3)
 - style collection file (4)
 - title object template with script TS2_Now (5)
 - animated background (6)
 - brief instructions for using the sample (7)
4. In the FDConfig2 program (for Forward TT/TA/TP/TS software) or SLTitlePreview (for Forward Lite software) select the broadcast standard 1080i50 (25 fps).



5. From the desktop shortcut start the OnAir3 application. In the "Setting" dialog open the "Title objects" tab (1). Load the title project from the file ~\TS2Now_s1\ts2now_s1.SLTitleProj (2). The title object with the script will be assigned to the title button "F9" (3) by default. Close the "Setting" dialog.



6. Select the "Schedules" file page (1). Click the "Customize" button (2). Click the "New page" button (3). Select the folder ~\TS2Now_s1 (4). Change the name of the file page header (5).



7. Select the file ts2now_comments_s1.airx (1) and double-click LMB to add a schedule.

Schedule commands:

- "Show" the title object with the TS2_Now script (2) - the command must be present at least once in the schedule (for example, at the beginning)
- The movie for which its title will be shown (3) - the title will be taken from the SLInI file; MarkIn/MarkOut marks are not used and the movie is played completely
- The movie for which its title will not be shown (4) - there is no SLInI file or comment with special characters
- Comment with the title of the movie (5) - begins with special symbols (##) specified in the "Comment label" script property; formatting tag used
- The movie for which the title will be shown (6) - it will be taken from the comment despite the presence of an SLInI file, because the title in the comment has higher priority; MarkIn/MarkOut marks are not used and the movie is played completely
- The movie for which its title will not be shown (7) - there is no SLInI file or comment with special characters
- Comment with the title of the movie (8) - begins with special characters (##) specified in the "Comment label" script property
- The movie for which the title will be shown (9) - MarkIn/MarkOut marks are used here to play only part of the movie



8. In the schedule set the execution position (1) and click the "Start" button (2).



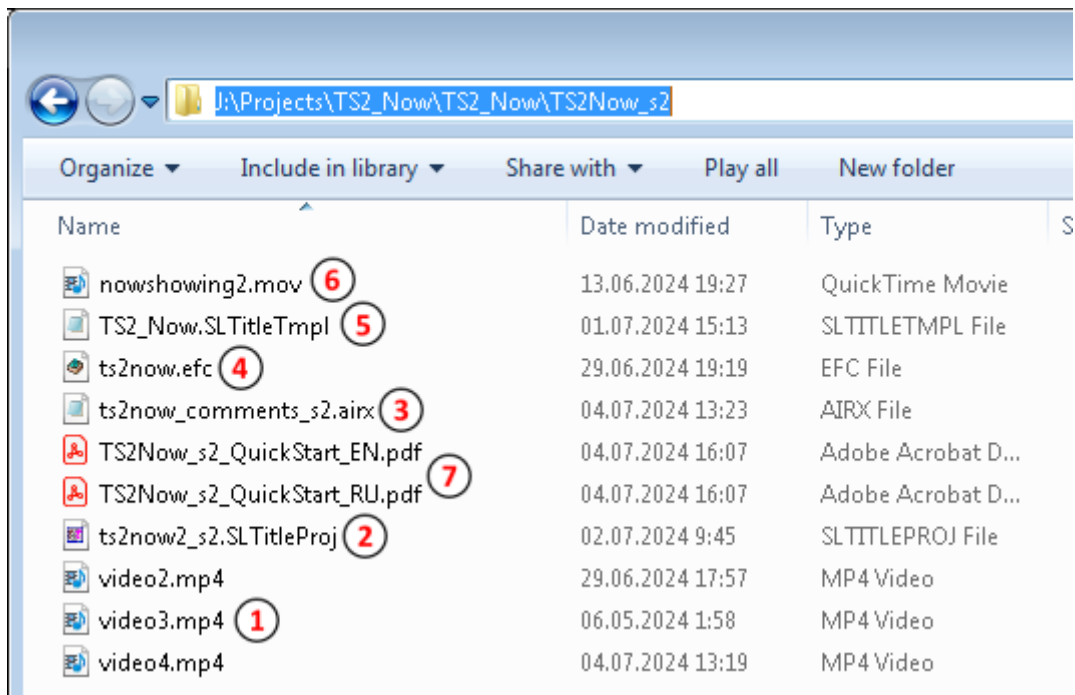
9. From the desktop shortcut start and configure the FDPreview application. Check the operation of the script and schedule.

TS2Now_s2 sample

In this sample:

- The additional text string (like "Now showing") is built directly into the animated background
- The title of the movie is taken from the comment in the schedule

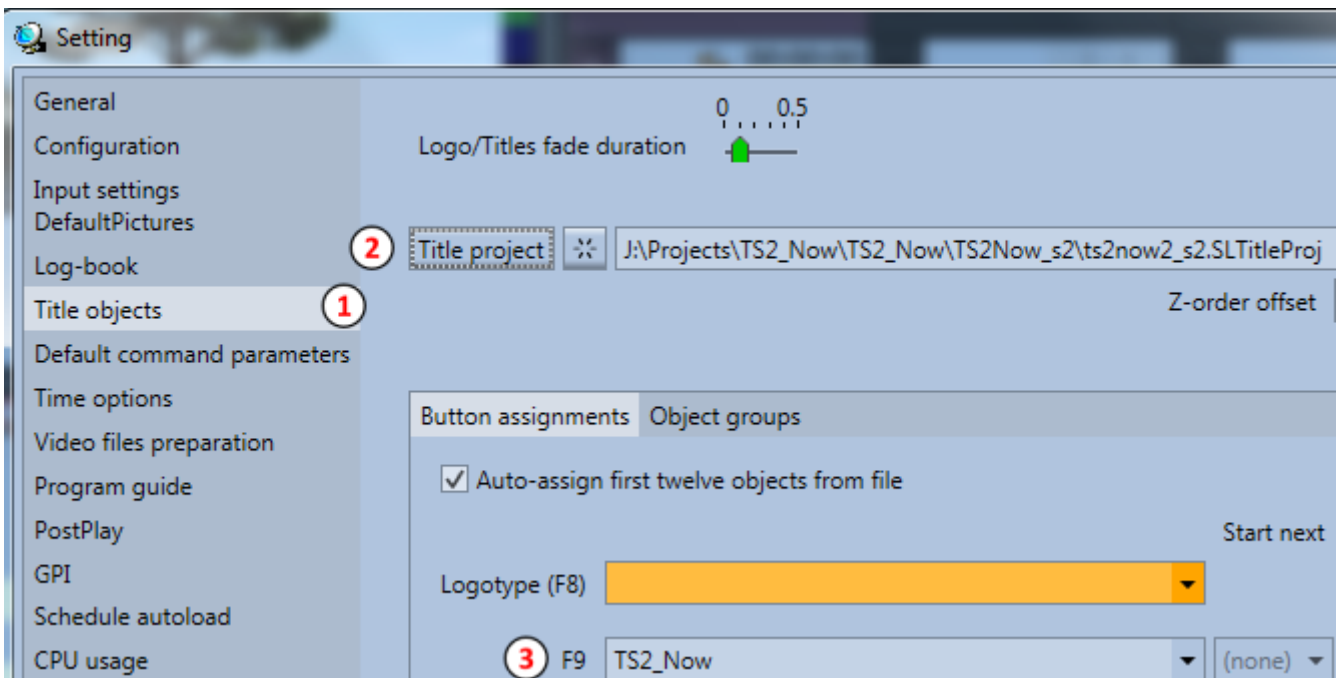
1. Install (if not installed) the latest version of Forward TT/TA/TP/TS/Lite software. Link to the installer and installation instructions [here](#).
2. [Download](#) the sample, unzip and copy it to your computer's hard drive.



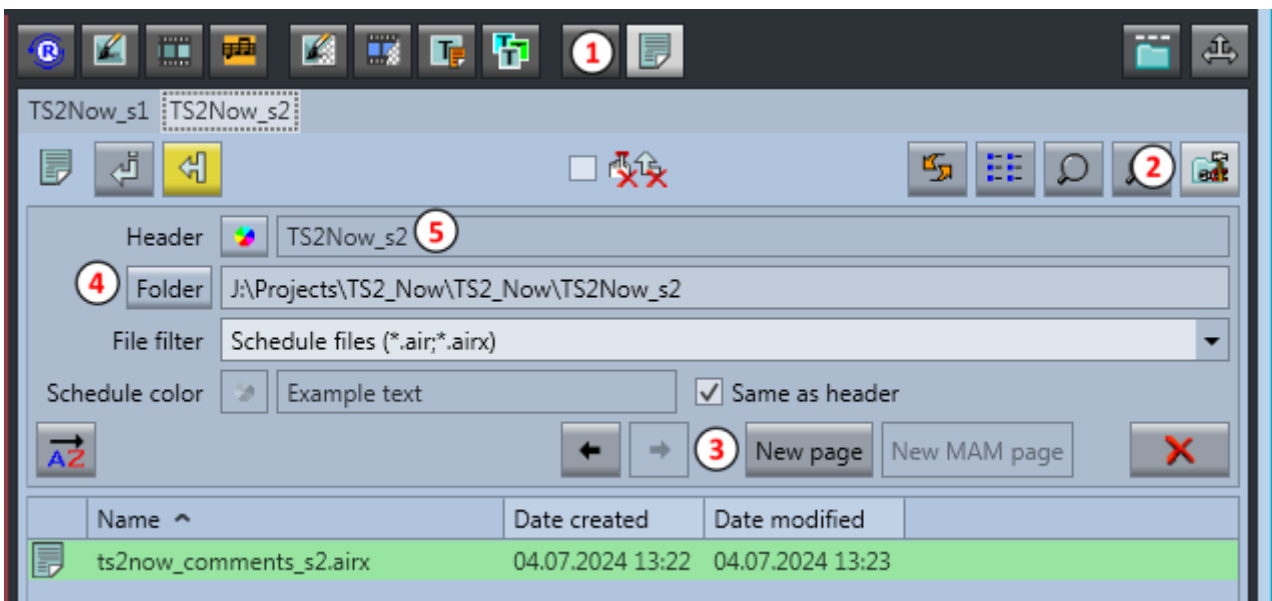
3. The ~\TS2Now_s2 directory contains the following files:

- movies for schedule (1)
- title project (2)
- schedule file(3)
- style collection file(4)
- title object template with script TS2_Now (5)
- animated background (6)
- brief instructions for using the sample (7)

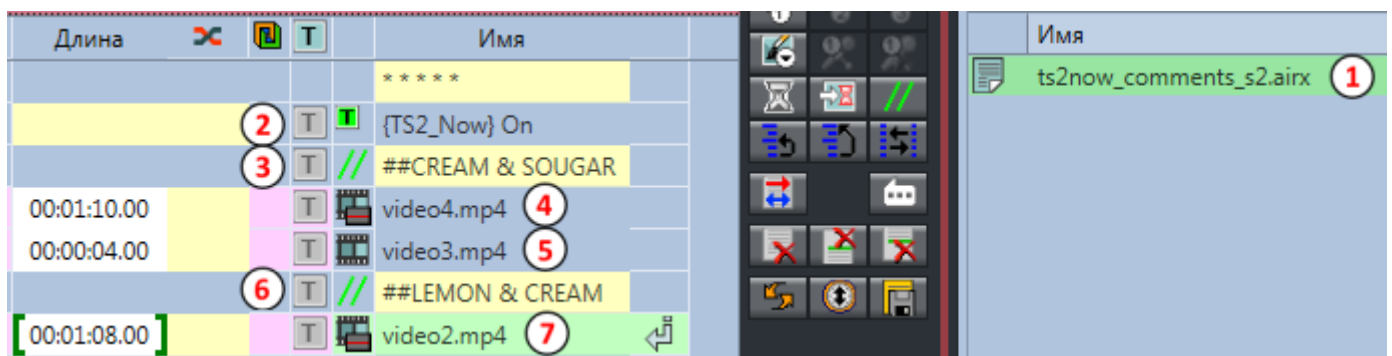
4. In the FDConfig2 application (for Forward TT/TA/TP/TS software) or SLTitlePreview (for Forward Lite software) select the broadcast standard 1080i50 (25 fps).



5. From the desktop shortcut start the OnAir3 program. In the "Setting" dialog open the "Title objects" tab (1). Load the title project from the file ~\TS2Now_s2\ts2now_s2.SLTitleProj (2). The title object with the script will be assigned to the title button "F9" (3) by default. Close the "Setting" dialog.



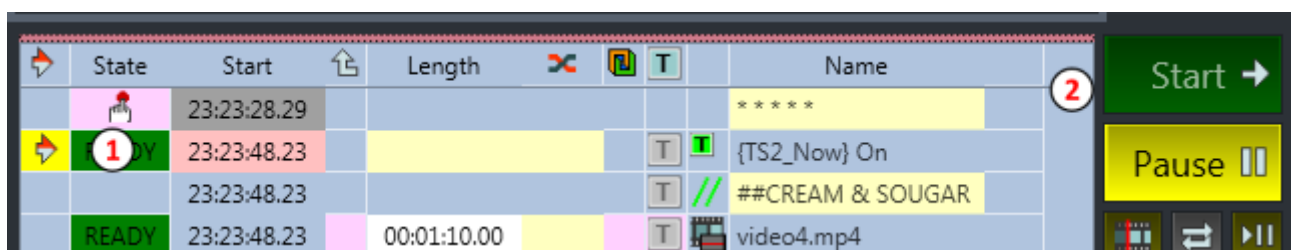
6. Select the "Schedules" file page (1). Click the "Customize" button (2). Click the "New page" button (3). Select the folder ~\TS2Now_s2 (4). Change the title of the file page header (6).



7. Select the file ts2now_comments_s2.airx (1) and double-click LMB to add a schedule.

Schedule commands:

- "Show" the title object with the TS2_Now script (2) - the command must be present at least once in the schedule (for example, at the beginning)
- Comment with the title of the movie (3) - begins with special symbols (##) specified in the "Comment label" script property
- The movie for which its title will be shown (4) - in this case MarkIn/MarkOut marks are not used and the movie is played completely
- The movie for which its title will not be shown (5) - no comment with special symbols or SLIni file
- Comment with the title of the movie (6) - begins with special symbols (##) specified in the "Comment label" script property
- Movie for which the title will be shown (7) - MarkIn/MarkOut marks are used here to play only part of the movie



8. In the schedule set the execution position (1) and click the "Start" button (2).

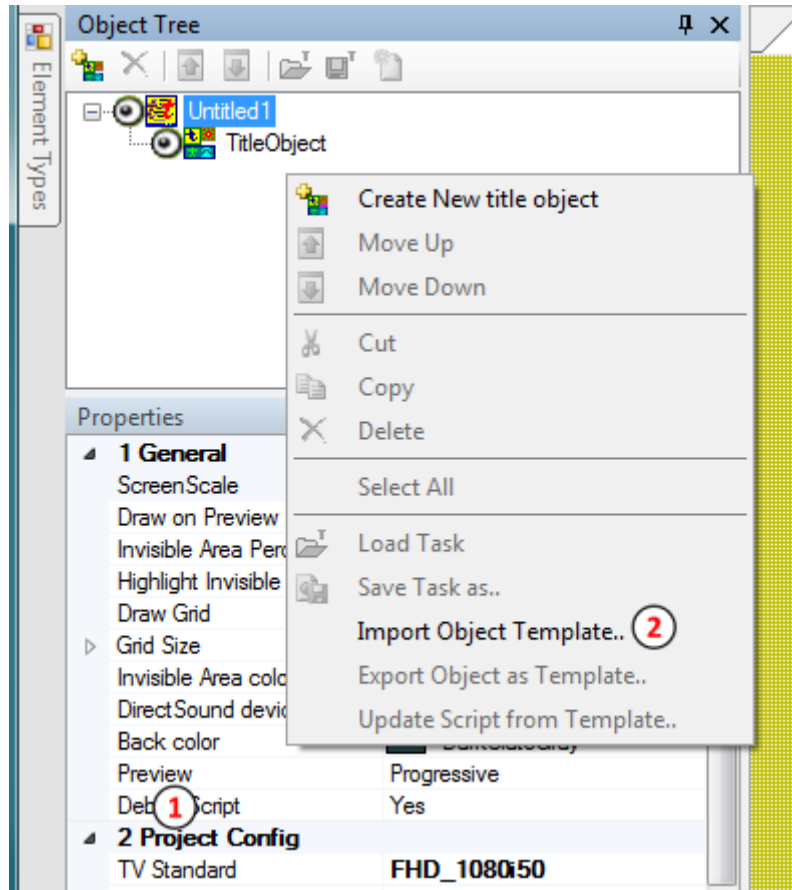


9. From the desktop shortcut start and configure the FDPreview program. Check the operation of the script and schedule.

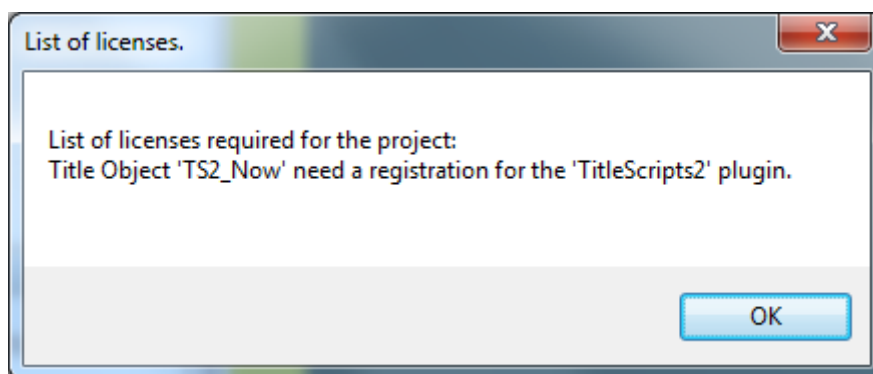
Customizing script settings for your working project

To use the script TS2_Now on your TV channel you need to customize it: change the location and size of title elements, specify a collection of styles, style index for the movie title, upload an animated background file,...

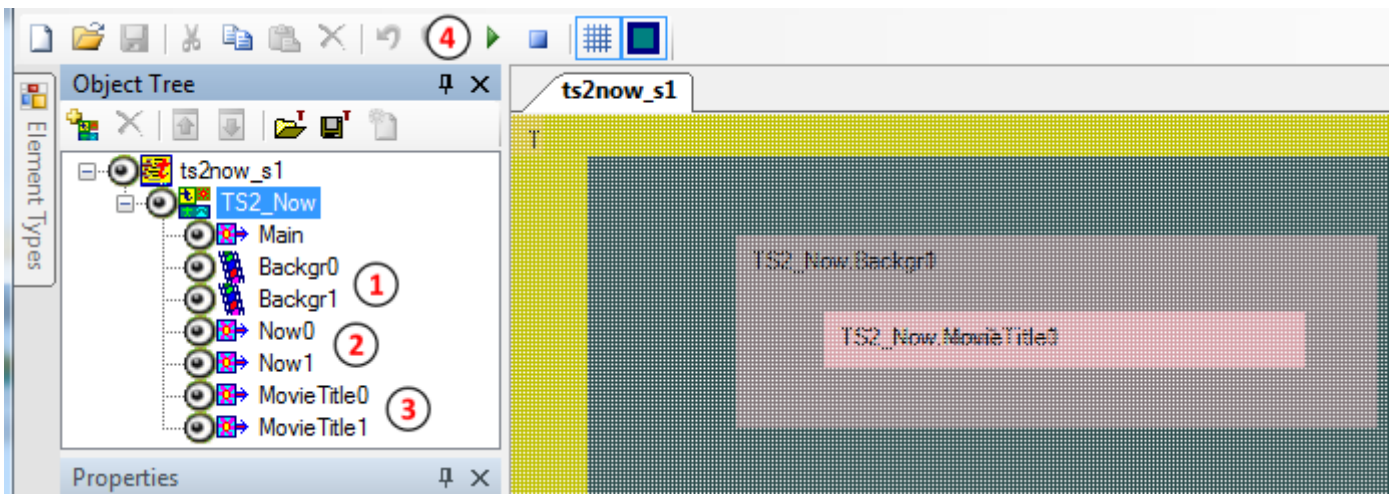
1. From the desktop shortcut start the FDTitleDesigner application.



2. Perform the initial settings of the title project: set the TV standard (FHD_1080i50), set the size of the work area and the alignment grid size,... (1). Right-click on a free area in the "Object Tree" window. In the menu select "Import Object Template..." (2). In the file opening dialog select a template file TS2_Now.SLtitleTmpl from any folder with samples ~\TS2Now_s1, ~\TS2Now_s2.



Important! No license is required to configure the TS2_Now script in FDTitleDesigner. This message is just informational. It warns you that license is required when using the script on a broadcast server.



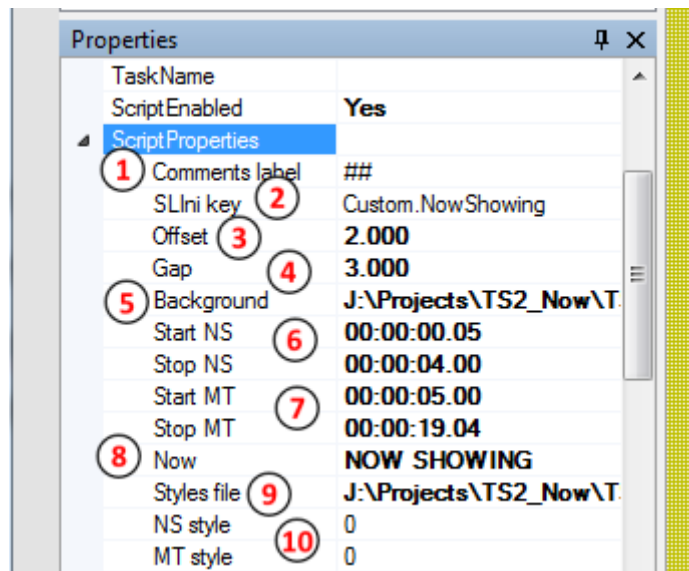
3. Configure the location and size of the title elements of the TS2_Now script.

The **Backgr0**, **Backgr1** elements (1) are used to display an animated background.

The **Now0**, **Now1** elements (2) are used to display an additional text string like “Now showing”.

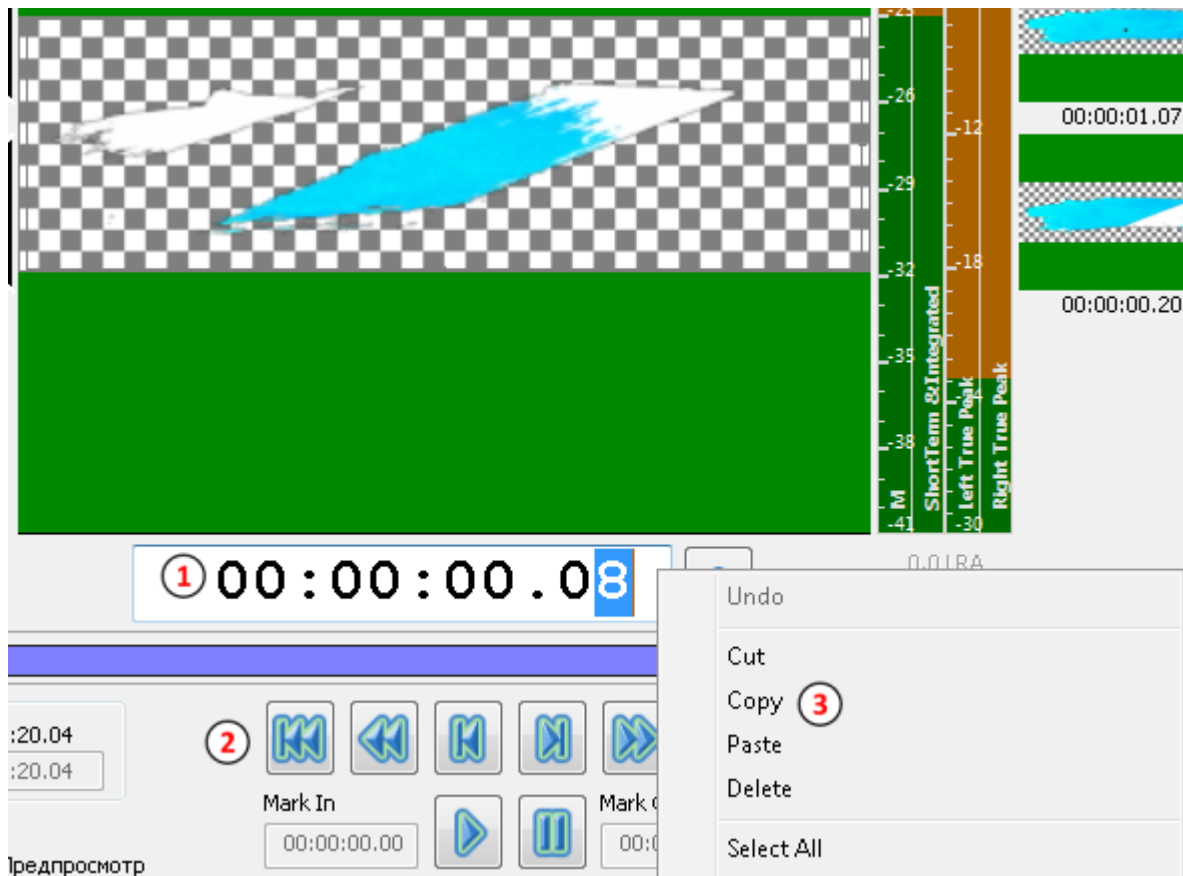
The **MovieTitle0**, **MovieTitle1** elements (3) are used to display the movie title.

Important! The size and location on the screen need to be changed only for the Backgr0/Now0/MovieTitle0 elements. After editing, you need to click the "Start Preview" button (4) so that the changes are applied to the Backgr1/Now1/MovieTitle1 elements.



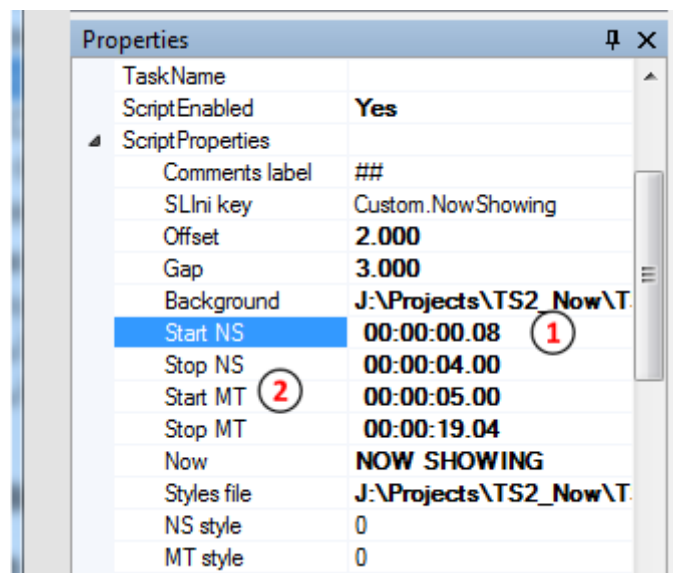
4. Configure script properties (1 - 10). Their description is given in the corresponding [section](#).

5. To set the properties "**Start NS**", "**Stop NS**", "**Start MT**", "**Stop MT**" you must use the TrimEditor: select the animated background file in the folder, right-click on it and select "SoftLab-NSK Trim Editor" from the menu.



Set a position on the frame that is visually suitable for starting to display an additional text string like "Now showing" (script property "**Start NS**"). This can be done directly in the field with the current position (1), using the buttons in TrimEditor (2) or the ">"/"<" buttons on the keyboard.

Right-click above the field showing the timecode (3). Select "Copy".



Paste the copied value into the script property "**Start NS**" (1). Similarly set the values for "**Stop NS**", "**Start MT**" and "**Stop MT**" (2).

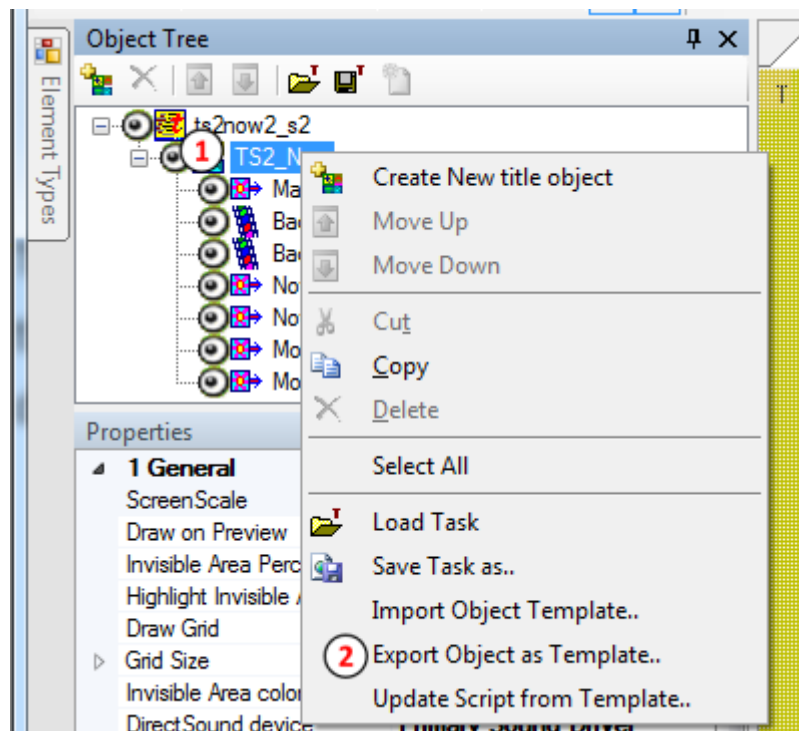
Gap	3.000
Background	J:\Projects\TS2_Now\TS2_
Start NS	00:00:01.00 (1)
Stop NS	00:00:02.00
Start MT	00:00:05.00
Stop MT	00:00:30.00
Now	(2)
Styles file	J:\Projects\TS2_Now\TS2_

6. If an additional text string (like "Now showing") is embedded into the animated background then the **"Start NS"** and **"Stop NS"** properties do not need to be set (leave the default values). The value of the "Now" property must be the empty string (2).

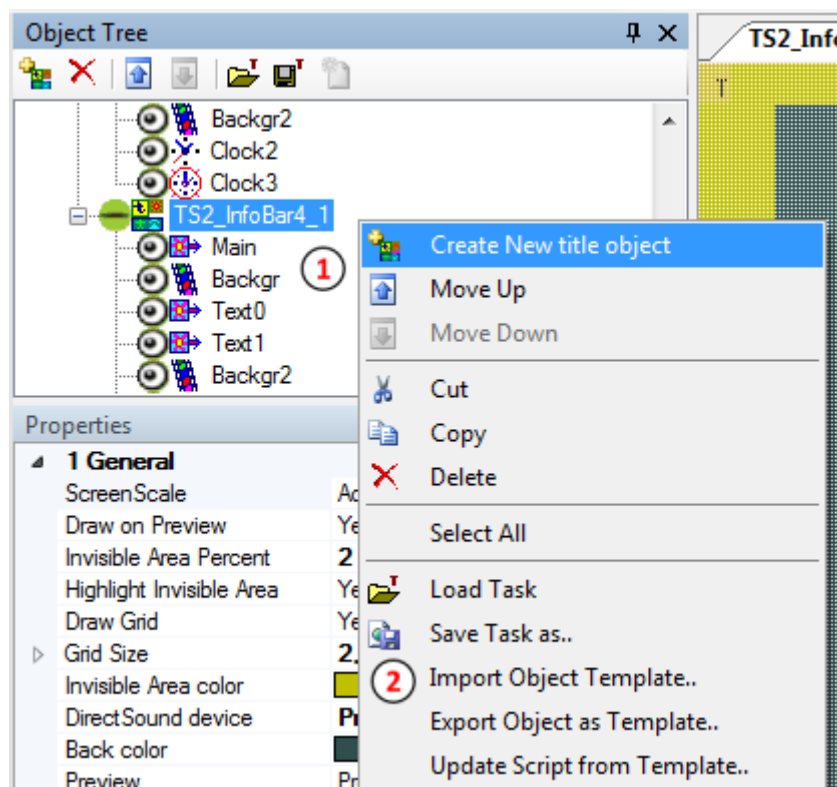
7. The elements **Now0/Now1** and **MovieTitle0/MovieTitle1** (1) are used to display the title of the movie and an additional text string like "Now on air". The rules (speed, direction) for their display are set directly in the properties of the title elements themselves (2).

Important! The display rules need to be changed only for the Now0/MovieTitle0 elements. After editing you need to click the "Start preview" button so that the changes are applied to the Now1 and MovieTitle1 elements.

8. Formatting tags can be used in the “Now” script property (1) and in the schedule comments with movie title (2). More details in the corresponding [document](#) (section "Tags of Formatting").



9. After customizing of script settings you need to save the TS2_Now title object into a template file: right-click on the title object in the object tree (1), select "Export Object as Template..." from the menu (2).



10. Import the title object TS2_Now from the previously saved template file into your working project: right-click in the object tree (1), in the menu select "Import Object Template..." (2). In the file selection dialog specify the template file TS2_Now.SLTitleTpl.