

# RollCrawl Title Element



Controlling the element  
using schedule commands

*Revision as of April 10, 2018*

Quick Start

## Notice

The information in this document is subject to change without prior notice in order to improve reliability, design, or function and does not represent a commitment on the part of this company.

In no event will we be liable for direct, indirect, special, incidental, or consequential damages arising out of the use or the inability to use the product or documentation, even if advised of the possibility of such damages.

Copyright © 1997–2018 SoftLab-NSK Co., Ltd.  
All Rights Reserved.

No part of this reference manual may be reproduced or transmitted in any form or by any means without the prior written permission of this company.

Throughout this manual, we make reference to product names that are trademarks of other companies. We are using these names for identification purposes only, with no intention of infringement of the trademarks.

## FCC Information

### FCC ID:

This equipment has been tested and found to comply with the limits for a Class B digital device, pursuant to Part 15 of the FCC Rules. These limits are designed to provide reasonable protection against harmful interference in a residential installation. This equipment generates uses and can radiate radio frequency energy and, if not installed and used in accordance with the instructions, may cause harmful interference to radio communications. However, there is no guarantee that interference will not occur in a particular installation. If this equipment does cause harmful interference to radio or television reception, which can be determined by turning the equipment off and on, the user is encouraged to try to correct the interference by one or more of the following measures:

Reorient or relocate the receiving antenna.

Increase the separation between the equipment and receiver.

Connect the equipment into an outlet on a circuit different from that to which the receiver is connected.

Consult the dealer or an experienced radio/TV technician for help.

Shielded cables and I/O cards must be used for this equipment to comply with the relevant FCC regulations. Changes or modifications not expressly approved in writing by SoftLab-NSK Co., Ltd. may void the user's authority to operate this equipment.

## Limited Warranty

Our company warrants this product against defects in materials and workmanship for a period of one year from the date of purchase. During the warranty period, products determined by us to be defective in form or function will be repaired or replaced at our option, at no charge. This warranty does not apply if the product has been damaged by accident, abuse, misuse, or as a result of service or modification other than by us.

This warranty is in lieu of any other warranty expressed or implied. In no event shall we be held liable for incidental or consequential damages, such as lost revenue or lost business opportunities arising from the purchase of this product.

---

## Table of Contents

General Information .....	4
Inserting commands into the schedule .....	5
Procedure for controlling a regular and a looped RollCrawl.....	7
1. Loop settings .....	7
2. Starting display.....	7
3. Stopping the crawl line .....	8
Example schedule with a regular RollCrawl.....	9
1. Task description.....	9
2. Inserting RollCrawl commands.....	9
3. Inserting the command to display an image.....	10
4. Configuring the order and time of object display .....	12
Example schedule with a looped RollCrawl.....	15

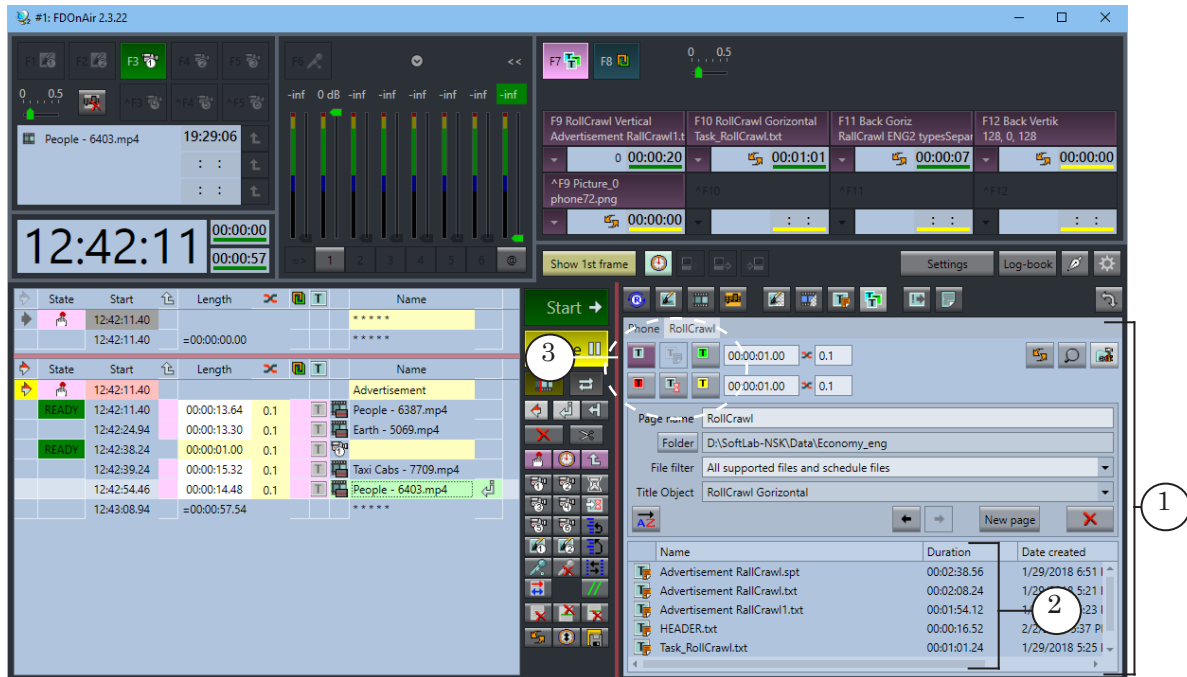




## General Information

The FDO nAir allows you to control title objects using schedule commands. To add commands to a schedule you need to use the Title objects files pages (1) that contain:

- lists of task files (2);
- buttons, designed to add title commands to the schedule (3).



✓ **Important:** Before creating and using a schedule you need to load the corresponding title project and configure the file pages. To load a project use the Title objects tab of the Settings window.

In order for the titles to be displayed on screen, 3 conditions need to be met:

1. A non-blank task must be loaded into the title object.
2. The object must be turned On.
3. The display of titles is turned On.



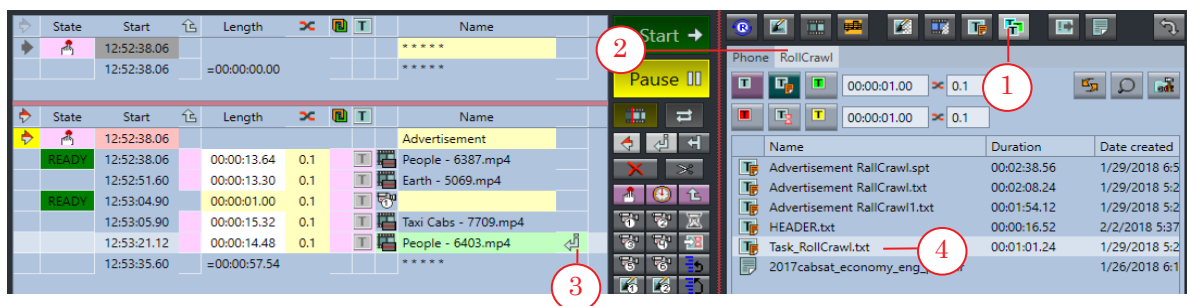
## Inserting commands into the schedule

Title object commands are inserted into the schedule using file pages. A separate page needs to be created for each title object.

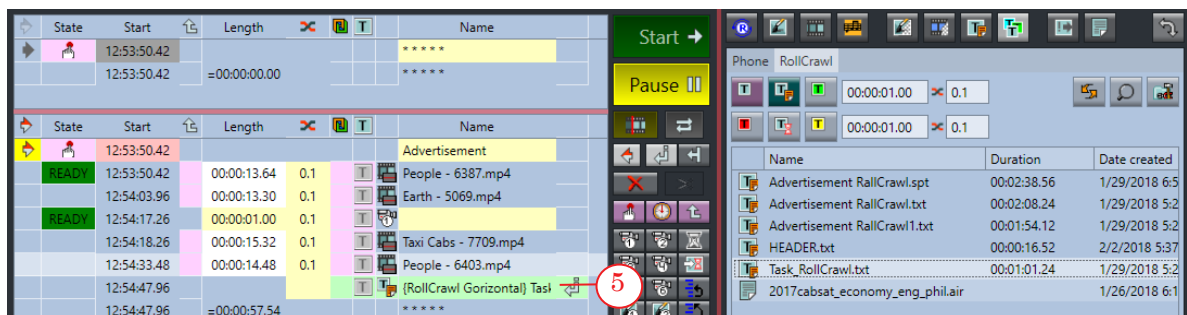
- ✓ **Important:** Commands that control a specific object can be only added after the object's file page has been created.

To insert a command into the schedule:

1. Go to the Title objects file pages group: press the Title Objects button (1).
2. Select the tab (2) of the necessary title object (RollCrawl in our case). Make sure that the necessary folder with the task files is open.
3. Move the insertion point to the schedule line (3), after which the new command needs to be inserted.
4. To insert the Load title object command, select the necessary task file (4) and double-click it.

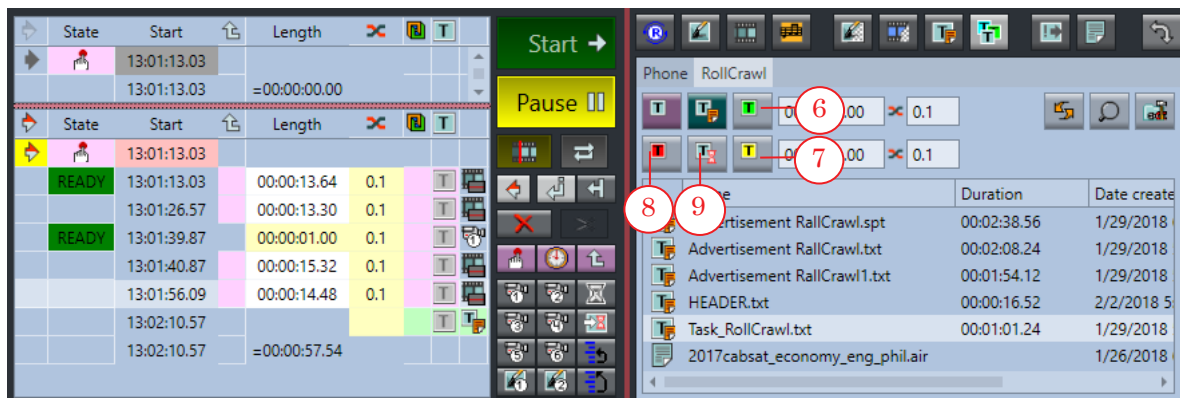


5. The command to load the selected task into the specified title object will be added to the schedule (5).





For the insertion of other commands special buttons on the file page are used:



6. The Title object On button (6) adds the command to turn on the RollCrawl to the schedule.

7. The Title object Off button (7) adds the command to turn off the RollCrawl to the schedule.

When executing this command the current message will finish displaying and only then the crawl line will turn off.

8. The Title object Abort button (8) will add the command to immediately stop the RollCrawl to the schedule.

When executing this command the current message will not finish displaying and the crawl line will turn off immediately.

9. The Wait title object button (9) will add the command to wait for the crawl line to finish to the schedule.

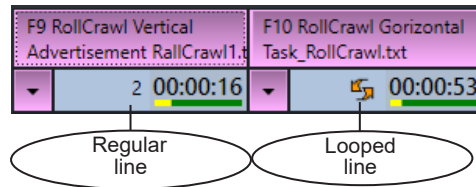
The next command will only be executed once the crawl line has stopped being displayed. If the duration is set, then the next command will start early by the specified time.



## Procedure for controlling a regular and a looped RollCrawl

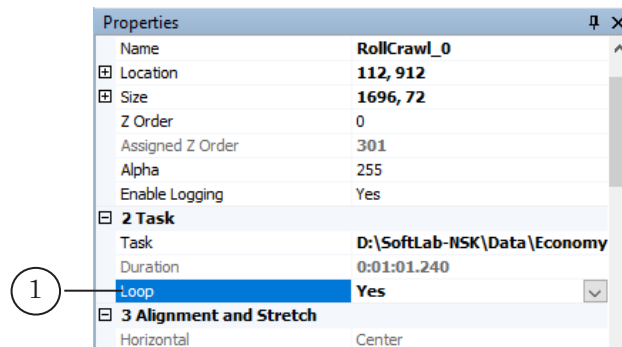
The procedure for controlling the title object with crawl line will depend on whether or not the RollCrawl element is looped.

The status of the RollCrawl (Looped/Regular) is displayed using a special indicator in the FDO nAir main window.

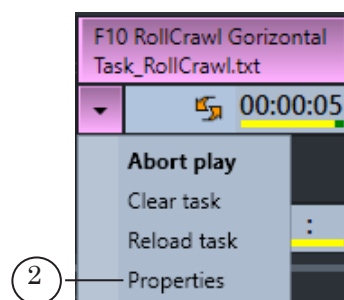


### 1. Loop settings

The looped display of the crawl line messages is configured in the FDTitleDesigner program window on the Properties panel in the Loop field (1).



In FDO nAir this setting can be changed using the drop-down menu from the corresponding element group: the Properties command (2).



### 2. Starting display

The display of the crawl line starts by the Title object On command.

Furthermore, for a regular RollCrawl, the display starts automatically after a new task has been loaded using the Load object task command.



---

### 3. Stopping the crawl line

If the RollCrawl is regular, its task is executed once and then the crawl line turns off.

If the RollCrawl is looped then crawl line messages are looped and its display will end only when manually ended i.e. until the Title object off command is executed or until the operator presses the corresponding button.





## Example schedule with a regular RollCrawl

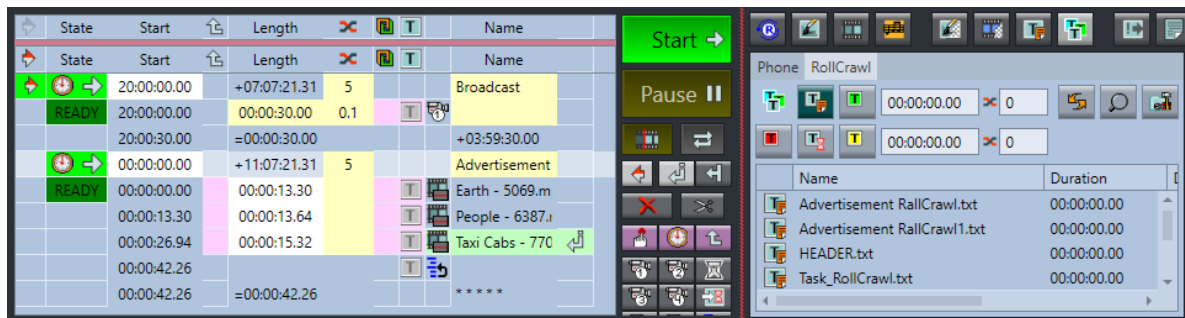
### 1. Task description

Let's look at an example of the control of a not looped crawl line using an example schedule that controls two title objects.

Let's say that we need to display pass-through video from the input (30 min.) and after that we need to display a block of ads. During the pass-through video display titles need to be displayed: crawl line and an image of a phone. When the ad block starts, the titles need to be turned off.

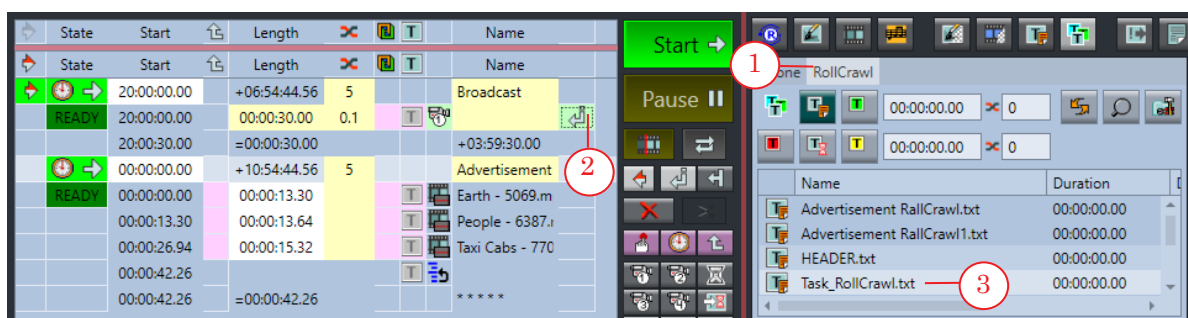
The necessary title project needs to be loaded into FDO nAir and all of the file pages for the crawl line (the RollCrawl title element) and image (the Picture title element) need to be configured beforehand. The RollCrawl title element is not looped.

The image below shows the pre-configured schedule.



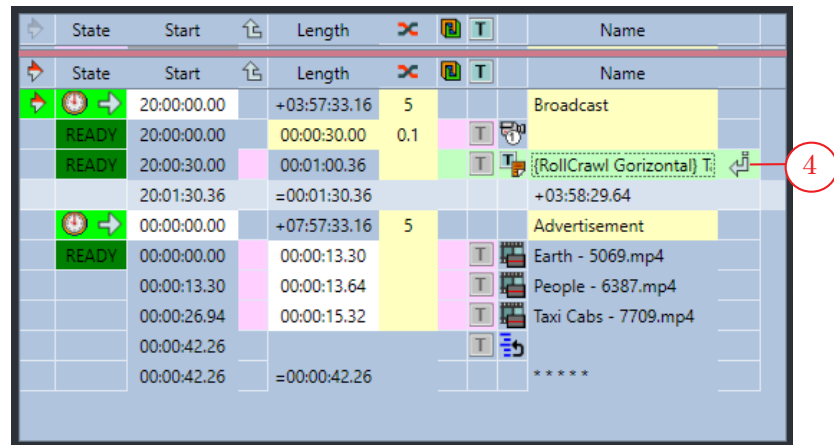
### 2. Inserting RollCrawl commands

1. Open the file page of the RollCrawl title object: click the RollCrawl tab (1).
2. Set the insertion marker (2) to the Video Input 1 command.
3. Insert the Load title object command: double-click on the file with the necessary task (3).





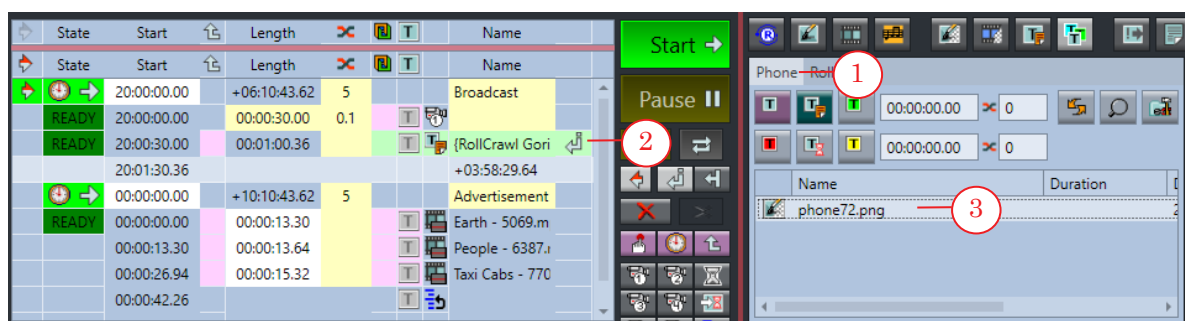
- The command for loading the specified task into the RollCrawl will be added to the schedule (4).



When this command is executed the task from the specified file will be loaded into the RollCrawl, and it will immediately start displaying (because the RollCrawl is not looped). The next command of the schedule will be executed after the RollCrawl has stopped.

### 3. Inserting the command to display an image

- Open the file page of the Picture title object: click the Picture tab (in our example the Phone tab (1)).
- Make sure that the insertion marker (2) is set to the Load title object command.
- Select the task for the Picture (3) and double-click it.





- The command to load the selected task into the Picture title element will be added to the schedule (4).

State	Start	Length		Name
READY	20:00:00.00	+04:42:31.57	5	Broadcast
READY	20:00:00.00	00:00:30.00	0.1	{RollCrawl Gori
READY	20:00:30.00	00:01:00.36		{Picture_0} phc
READY	20:01:30.36			+03:58:29.64
READY	20:01:30.36	=00:01:30.36		Advertisement
READY	00:00:00.00	+08:42:31.57	5	Earth - 5069.m
READY	00:00:00.00	00:00:13.30		People - 6387.r
READY	00:00:13.30	00:00:13.64		Taxi Cabs - 770
READY	00:00:26.94	00:00:15.32		

- Press Title object On (5).
- Press Title object Off (6).

The screenshot shows the software interface with the schedule table on the left and a control panel on the right. The control panel has a 'Start' button, a 'Pause' button, and two buttons for the title object: '{Picture\_0} On' (labeled 5) and '{Picture\_0} Off' (labeled 6). The schedule table shows the same data as the previous screenshot, but with the '{Picture\_0} On' and '{Picture\_0} Off' rows added.

- The corresponding commands (7) will be added to the schedule.

State	Start	Length		Name
READY	20:00:00.00	+04:40:30.75	5	Broadcast
READY	20:00:00.00	00:00:30.00	0.1	{RollCrawl Gori
READY	20:00:30.00	00:01:00.36		{Picture_0} phc
READY	20:01:30.36			{Picture_0} On
READY	20:01:30.36			{Picture_0} Off
READY	20:01:30.36	=00:01:30.36		+03:58:29.64
READY	00:00:00.00	+08:40:30.75	5	Advertisement
READY	00:00:00.00	00:00:13.30		Earth - 5069.m
READY	00:00:13.30	00:00:13.64		People - 6387.r
READY	00:00:26.94	00:00:15.32		Taxi Cabs - 770

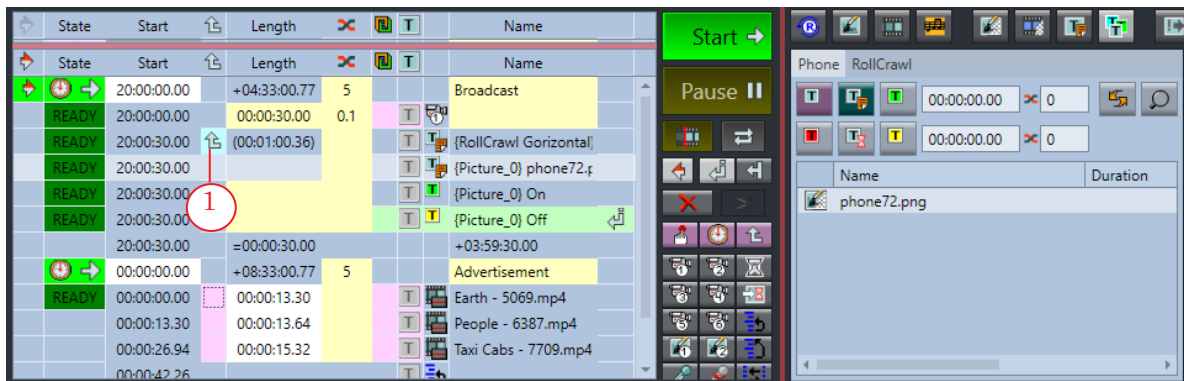
The creation of the schedule is not complete. If you leave the schedule as is, the crawl line and the image will not be displayed simultaneously: first the crawl line will be displayed, then the image, and the image will be only be displayed for 1 second.



#### 4. Configuring the order and time of object display

1. Configure the parallel execution of the Load title object commands:

In the line with the RollCrawl load command click in the Next command simultaneously column (1).



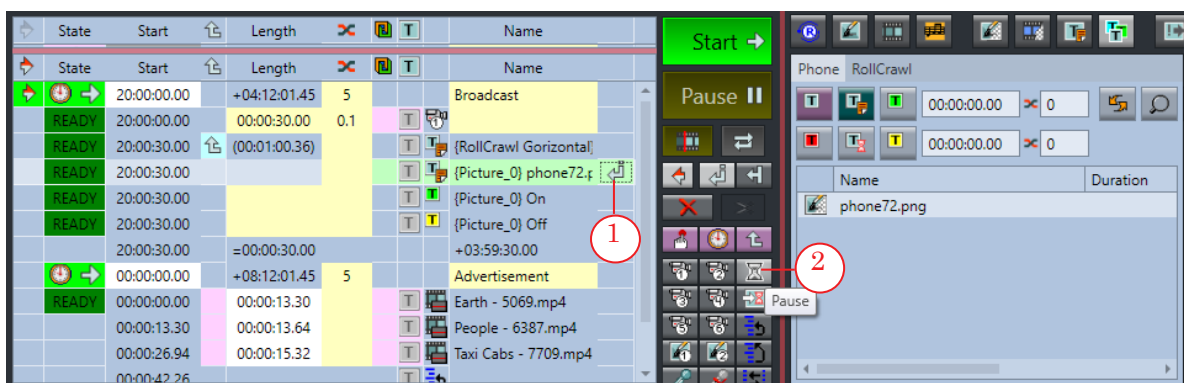
An icon (1) will appear that indicates that this and the following command will be executed simultaneously.

Now the Picture load command will not wait until the crawl line has stopped. The loading of the RollCrawl and the Picture will be executed simultaneously. After loading the image the next command will be executed.

2. Configure a pause between the display start of the RollCrawl and the Picture:

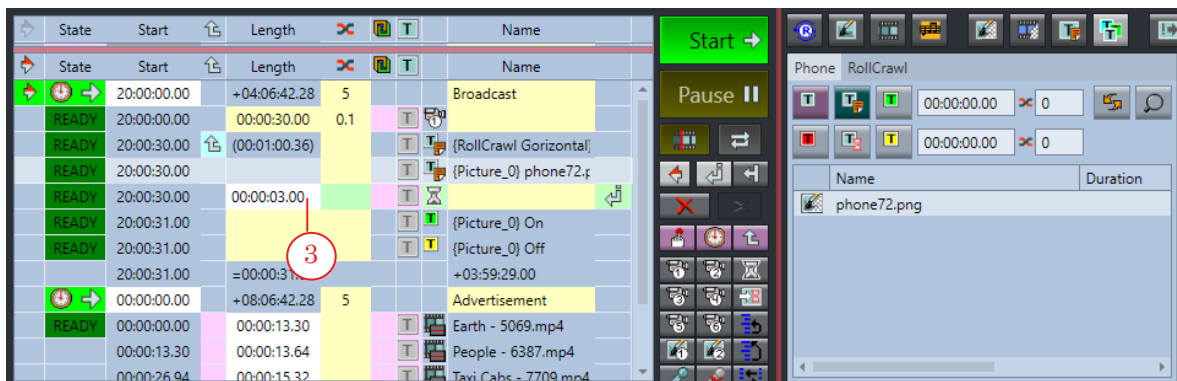
1. Set the editing marker to the line with the Picture Load title object command (1).

2. Press Pause (2). The Pause command will be added.

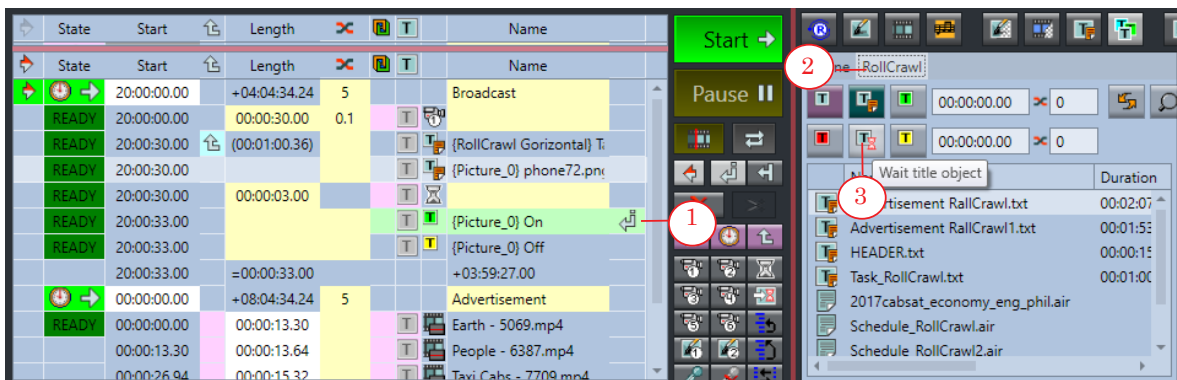




3. Set the duration of the pause: click the Length column of the selected line and set the value (3), for example 3 seconds.



3. Configure the image display duration. The image should be displayed while the crawl line is displayed and should turn off 3 seconds before the crawl line stops. You can use the Wait title object command.
  1. Set the insertion marker to the line with the command for turning on the image (1).
  2. Go to the file page of the RollCrawl (2).
  3. Press Wait title object (3). The command to wait for the end of the crawl line will be added to the schedule.





4. Click the Name column in the selected line and set the value of 3 seconds (4).

State	Start	Length			Name
READY	20:00:00.00	+03:42:03.09	5		Broadcast
READY	20:00:00.00	00:00:30.00	0.1		{RollCrawl Gorizontal} Task_RollCra
READY	20:00:30.00	(00:01:00.36)			{Picture_0} phone72.png
READY	20:00:30.00	00:00:03.00			{Picture_0} On
READY	20:00:33.00				{Picture_0} Off
READY	20:00:33.00				{RollCrawl Gorizontal} 00:00:03.00
	20:00:33.00	=00:00:33.00			+00:29:27.00
READY	20:30:00.00	+04:12:03.09	5		Advertisement
READY	20:30:00.00	00:00:13.30			Earth - 5069.mp4
	20:30:13.30	00:00:13.64			People - 6387.mp4
	20:30:26.94	00:00:15.32			Taxi Cabs - 7709.mp4
	20:30:42.26				
	20:30:42.26	=00:00:42.26			*****

As a result the command to turn off the image that comes after the added one will be executed 3 seconds before the crawl line ends.

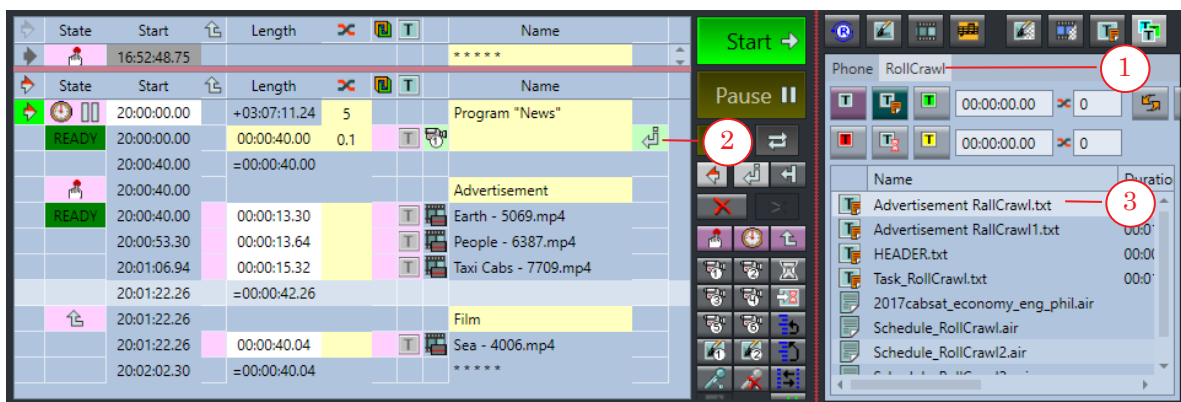
The schedule is created. When running this schedule, the crawl line will be displayed over the input video, and after 3 seconds of its display an image of a phone will appear and disappear 3 seconds before the crawl line stops.



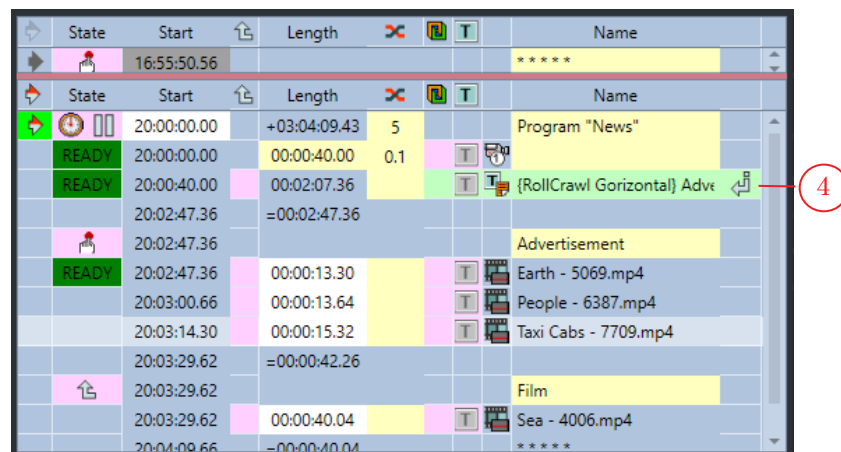
## Example schedule with a looped RollCrawl

In our example there is a live translation of a «News» program from the video input, after which an ad block and a movie are broadcast. During the news program a looped crawl line with financial news needs to be displayed.

1. In the Title objects page group select the RollCrawl tab (1).
2. With a single click set the insertion marker to the line with the Video Input 1 command (2).
3. Select the necessary task file (3) on the file page. Using a double-click add the Load title object command into the schedule.



4. The command (4) will be added to the schedule.

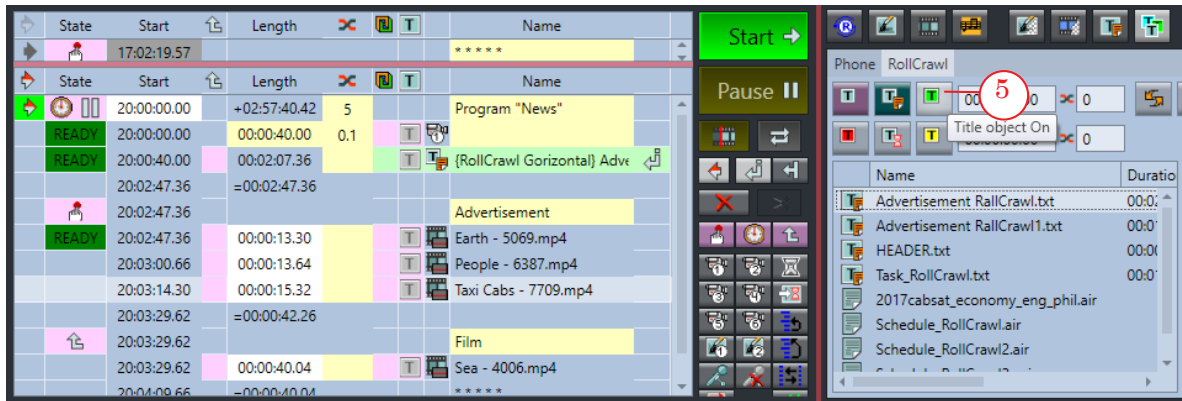


✓ **Important:** For a looped crawl line you need to add the turn on command because the load task command will not start the crawl line.

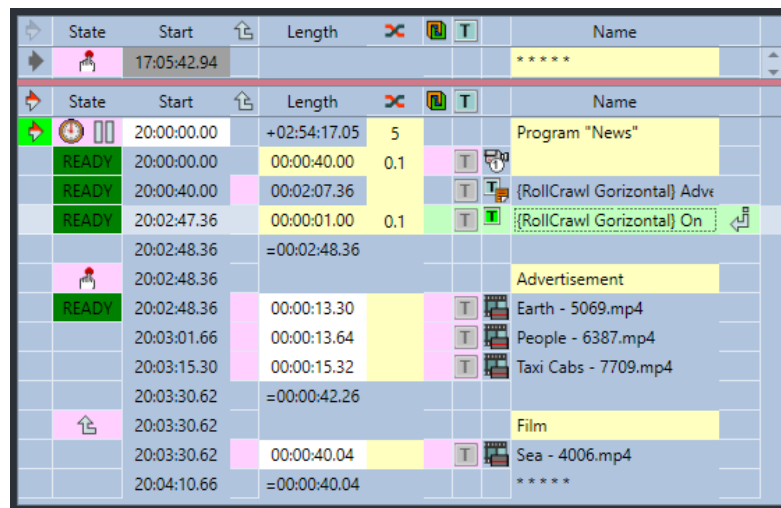




5. Add the Title object On command: press Title object On (5).

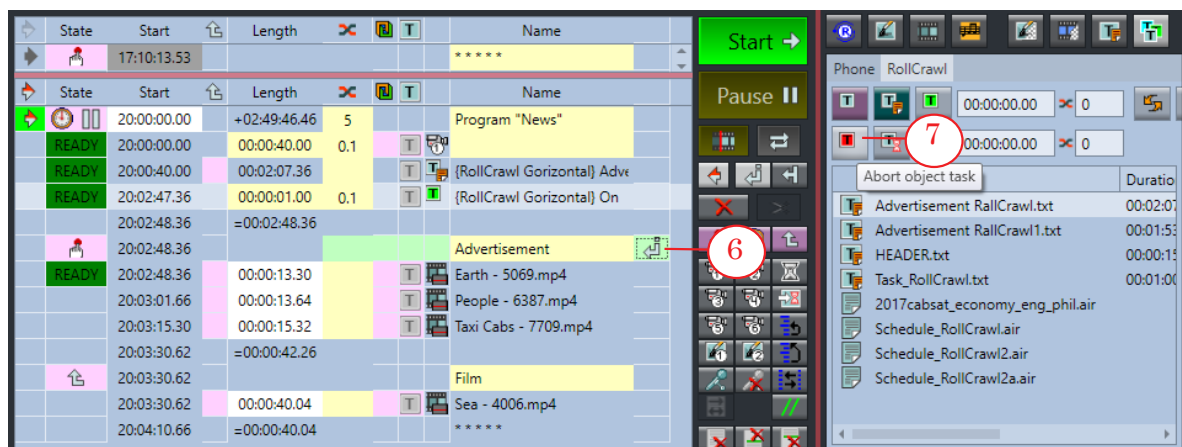


The looped crawl line will repeat multiple times until the turn off command.



6. Set the insertion marker to the first line of the ad block (6) that comes after the crawl line commands.

7. Press the Title object Abort button (7).







8. The Abort object task command (8) for the crawl line will appear in the schedule.

State	Start	Length		Name
	17:40:24.34			*****
	20:00:00.00	+02:19:35.65	5	Program "News"
READY	20:00:00.00	00:00:40.00	0.1	(RollCrawl Gorizonta) Adv
READY	20:00:40.00	00:02:07.36		(RollCrawl Gorizonta) On
READY	20:02:47.36	00:00:01.00	0.1	(RollCrawl Gorizonta) On
	20:02:48.36	=00:02:48.36		Advertisement
READY	20:02:48.36			(RollCrawl Gorizonta) Abor
READY	20:02:48.36	00:00:13.30		Earth - 5069.mp4
	20:03:01.66	00:00:13.64		People - 6387.mp4
	20:03:15.30	00:00:15.32		Taxi Cabs - 7709.mp4
	20:03:30.62	=00:00:42.26		Film
	20:03:30.62	00:00:40.04		Sea - 4006.mp4

When running this schedule during the translation of the live broadcast the looped crawl line will be displayed. Once the ad block starts on the operator's command, the crawl line will stop immediately, not waiting for the current message to stop displaying.



---

## Useful Links

### **Forward T Product Line: Description, Software Delivery, Documentation, Ready Solutions**

<http://softlab.tv/forward/index.html>

### **Tech Support**

e-mail: [forward@softlab.tv](mailto:forward@softlab.tv)

[forward@sl.iae.nsk.su](mailto:forward@sl.iae.nsk.su)

[forward@softlab-nsk.com](mailto:forward@softlab-nsk.com)

### **Forums**

<http://www.softlab-nsk.com/forum> (currently available in Russian only)